

CALDERA C3

V2026.01



Be ready to RIP!

- Pre-loaded UbuntuOS & CalderaRIP
- Independent recovery thanks to the included restoration USB stick
- 15% faster in hal tone, and 30% faster in contone compared to the C3 v2023.07

THE HIGH-END RIP STATION



Intel i9

- 24 cores
- 24 threads



Nvidia A1000

- 8GB
- GDDR6
- PCI 4.0x8

Non-Volatile Memory Express (NVMe)

Interface for SSD on PCIe

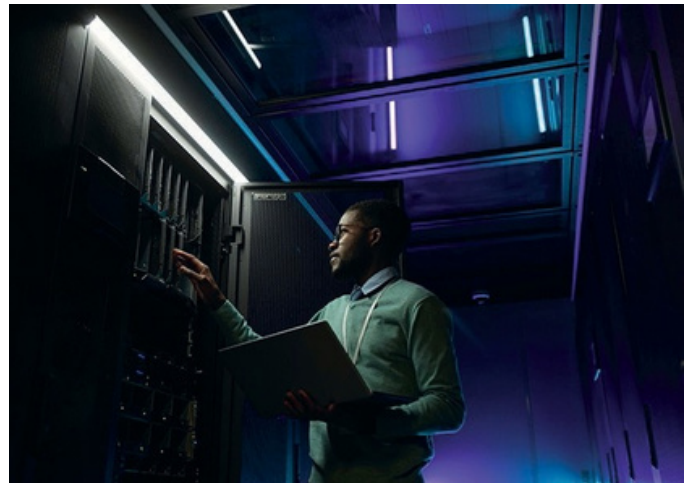
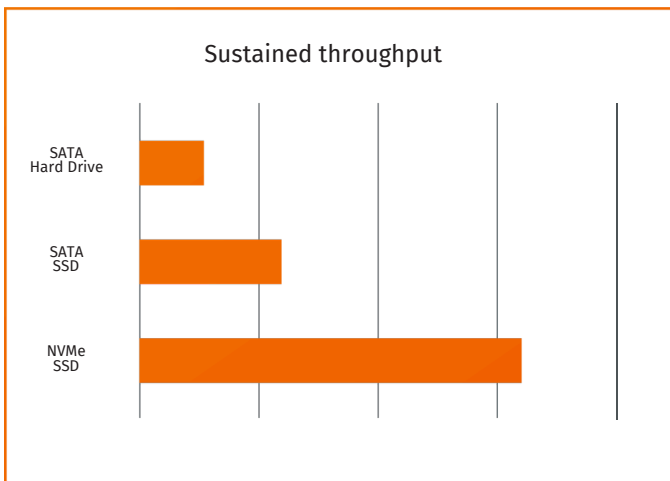
- 3x times faster than SATA SSD

DELL ProSupport Included

3 year warranty

Phone support 24h/24 - 365d/year

On site intervention, day a ter call (ProSupport D+1)



CALDERA C3

V2026.01

SPECIFICATIONS¹:

Processor	Intel Core i9 14th Gen 14900, 24 cores, 36 MB, 32 Threads, from 2.0 GHz to 5.8 GHz, 65W
Memory	32 GB DDR5, non-ECC
Hard Drive	SSD 1 TB M.2 PCIe NVMe™ Gen 4
Pre-installed OS & software	Linux Ubuntu OS and CalderaRIP
Video Card	NVIDIA A1000 – Dual screen supported
Additional card	Ethernet Intel NIC i225 (low profile)
Optical Drive	No optical drive
Keyboard	Dell USB (AZERTY or US QWERTY)
Mouse	Dell USB Mouse
Warranty Package	3 years of DELL ProSupport, Next Business Day On-Site Service
dimensions / weight	48 x 39 x 26 cm / 8 kg



30 cm

Caldera C3

Dell Pro Max Compact CTO



 AND/OR
 AND/OR
 AND/OR


Mini DP_1 Mini DP_2 Mini DP_3 Mini DP_4

 Recommended video ports

 Video ports not recommended

 USB 3.0

SCREEN OUTPUTS



Dell P2425H*






Caldera C1 / C2 / C3

C3 COMPATIBLE ADAPTERS**





Mini DP
DP



LAN for network intranet & internet

LAN for direct connection with printer

¹Or equivalent. The material and/or its components are subject to modifications due to supply issues caused by the COVID-19 pandemic. *Dell P2425H not included. **Adapters not included.