

CALDERA C1

V2025.07



Be ready to RIP!

- Pre-loaded Linux Ubuntu & CalderaRIP
- Independent recovery thanks to the included restoration USB stick
- 15% faster in halftone, and 10% faster in contone compared to the C1 v2023.07
- Designed for fleet management

THE SMALL FORM FACTOR RIP STATION

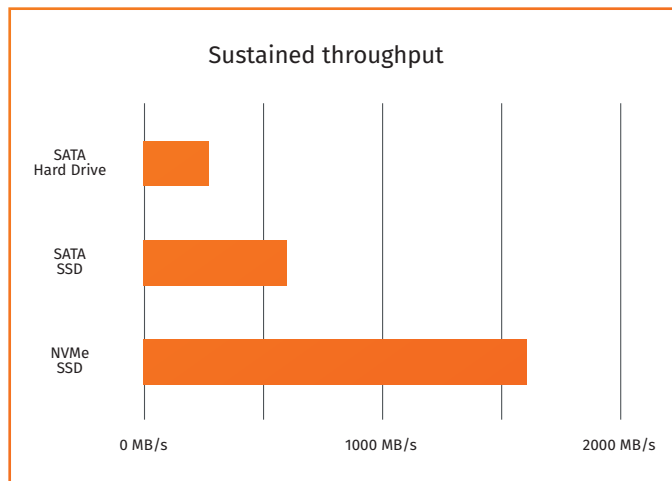
An integrated discrete device designed for RIPPING



Non-Volatile Memory Express (NVMe)

Interface for SSD on PCIe

- 3 times faster than SATA SSD

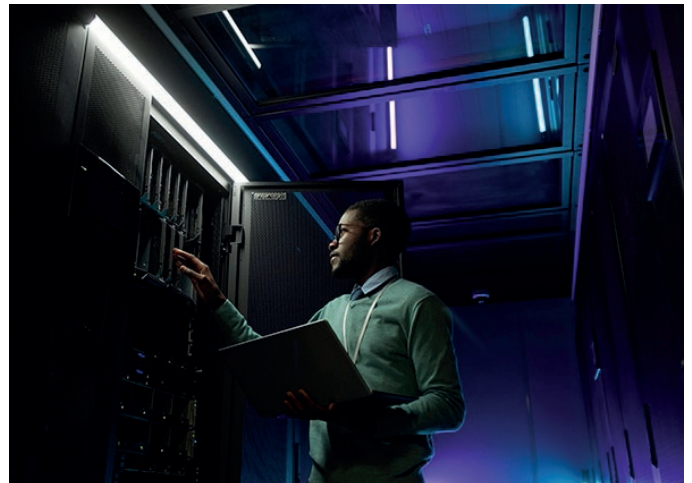


DELL ProSupport Included

3 year warranty

Phone support 24h/24 – 365d/year

On site intervention, day after call (ProSupport D+1)

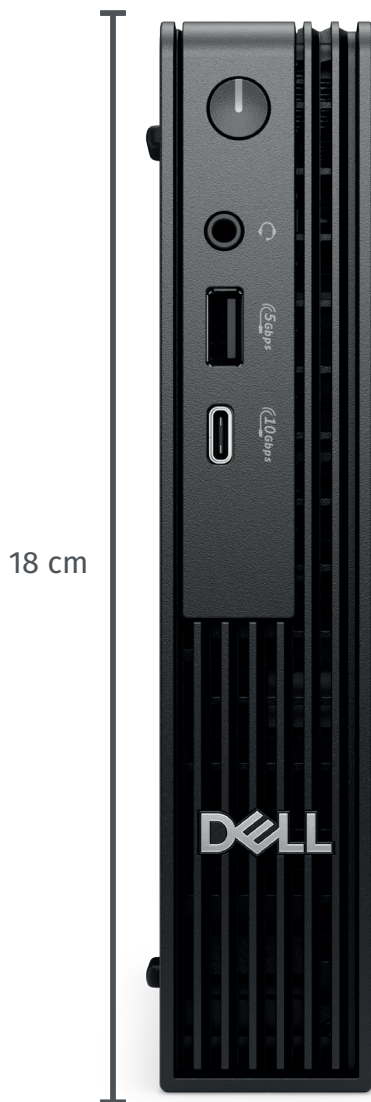


CALDERA C1

V2025.07

SPECIFICATIONS¹:

Processor	Intel Core i3 14100T (8 cores, up to 4,4 GHz)
Memory	8GB DDR5
Hard Drive	SSD 256 GB
Pre-installed OS & software	Linux Ubuntu OS and CalderaRIP
Video Card	Intel Integrated Graphics - Dual screen not supported
Additional card	No additional card
Optical Drive	No optical drive
Keyboard	Dell USB (AZERTY or US QWERTY)
Mouse	Dell USB Mouse
Warranty	3 years of DELL ProSupport, Next Business Day On-Site Service
Package dimensions / weight	50 x 24 x 13 cm / 3 kg



Caldera C1 Dell Pro Micro QCM1250



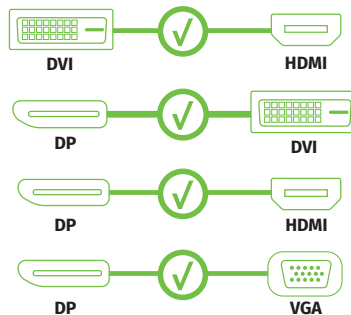
- Recommended video ports
- USB 3.0

SCREEN OUTPUTS



✓ Caldera C1 / C2 / C3

C1 COMPATIBLE ADAPTERS**



¹Or equivalent. The material and/or its components are subject to modifications due to supply issues caused by the COVID-19 pandemic. *Dell P2425H not included. **Adapters not included.