

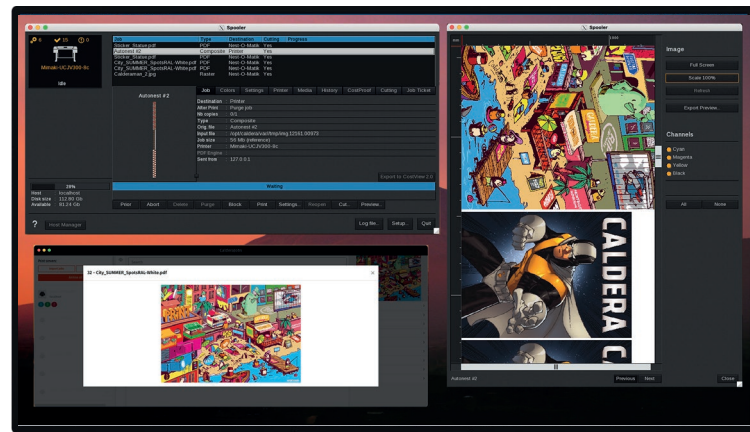
Caldera

GrandRIP+

CALDERA 

The solution for grand-format visual communication, packaging and industrial printing

- Unify your workflow from prepress to print & cut
- Achieve consistent colors on your printers & substrates
- Automate tasks to save time
- Reduce your production costs



For grand-format, multi-device, high-volume production environments



COLOR MANAGEMENT

Print consistent colors across your printers and substrates

- ✓ Access official spot color libraries (Pantone, RAL, HKS...)
- ✓ Create your own ICC profiles
- ✓ Download ready-to-use color profiles from our online library
- ✓ Calibrate your devices



HIGH PERFORMANCE

Automate your workflow to save time & reduce errors

- ✓ Faster image processing
- ✓ Maximize your printer uptime
- ✓ Reduce your production costs
- ✓ Optimize the use of your resources



SCALE YOUR PRODUCTION

Drive all your printers with one CalderaRIP license

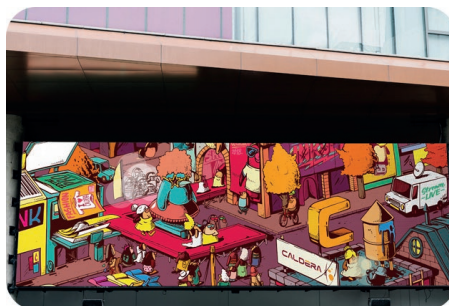
- ✓ One RIP for all your devices
- ✓ Reduced training times
- ✓ Streamline your processes
- ✓ Add new RIP stations as your business grows



MULTI-LEVEL AUTOMATION

Save time and increase your productivity

- ✓ Create your own production workflows
- ✓ Setup and manage hotfolders
- ✓ Automatically nest your images
- ✓ Use presets to speed up job submission and production





Caldera

GrandRIP+

CalderaRIP
Version 18

Exclusive CalderaCare features

CalderaCare is a set of additional, exclusive features including all major upgrades, premium training content and priority access to our technical support.



InkPerformer

Activate InkPerformer to reduce ink consumption by up to 35% without compromising color accuracy. Customers with a CalderaCare subscription receive 1 InkPerformer license free of charge for every 3 drivers they own.



REST API

Use the REST API to facilitate the integration of CalderaRIP with third-party applications. Connect your RIP to your web shop or ERP software for a more efficient workflow, and to enable automatic job submission, job spooling and job cost tracking.



SmartImport

Automatically extract metadata from the filename (copies, printer, presets, height, width, scale) to automate job submission, save time & avoid manual errors.



PrintProof

Export TIFF proofs of your jobs after ripping and send them to your customers for validation. Avoid waste and reprints.

FEATURES

Applications	Visual Communication, Industrial Printing, Packaging	
	Pro	Enterprise
# users included	1	1
# printer drivers included	1 Grand	1 Grand
PDF WORKFLOW		
Adobe PDF Print Engine 6.2	✓	✓
PREPRESS		
Tex&Repeat	✓	✓
PrintBleed	✓	✓
Compose	✓	✓
Tiling+	✓	✓
CUT WORKFLOW		
Contour Nesting	✓	✓
Cut Server	✓	✓
Grand Cut Server	Option	✓
Trim-O-Matik	Option	Option
PRODUCTION OPTIMIZATION		
CostProof	Option	✓
Hardware Acceleration	CalderaCare	CalderaCare
InkPerformer	Option	Option
COLOR MANAGEMENT		
Spot Colors	✓	✓
ICC profile creation	✓	✓
Custom Inkset	Option	Option
Print Standard Verifier	Option	Option
RGB Workflow	Option	Option
AUTOMATION		
Unlimited Hotfolders	✓	✓
Nexio	Option	Option

DISCOVER OUR BEST-SELLING OPTIONS



PRINT STANDARD VERIFIER

Check the conformity of your prints

PrintStandardVerifier embeds professional standards and specifications to perform conformity checks of your printing processes in terms of color consistency.



HARDWARE ACCELERATION

Speed up ripping & printing tasks

Take advantage of your hardware's full capabilities to dramatically reduce ripping and printing times! Speed up your production to deliver all your jobs right on time.

RESOURCES



REQUEST YOUR FREE DEMO
workspace.caldera.com



ACCESS OUR KNOWLEDGE BASE
helpdesk.caldera.com



WATCH OUR VIDEOS
youtube.com/calderarip

SYSTEM REQUIREMENTS

CalderaRIP is compatible with Linux and macOS to guarantee stable performance and reliability. Visit our website at www.caldera.com for more information. Our catalogue includes pre-installed DELL computers, ask your Caldera reseller or sales representative for more information.

CALDERA
a DOVER company



CALDERA - 1 rue des Frères Lumière - P.A. d'Eckolsheim - 67201 Strasbourg - France
www.caldera.com - Tel. +33 388 210 000 - contact@caldera.com