

EN



Print Software Driven by Innovation

ABOUT CALDERA

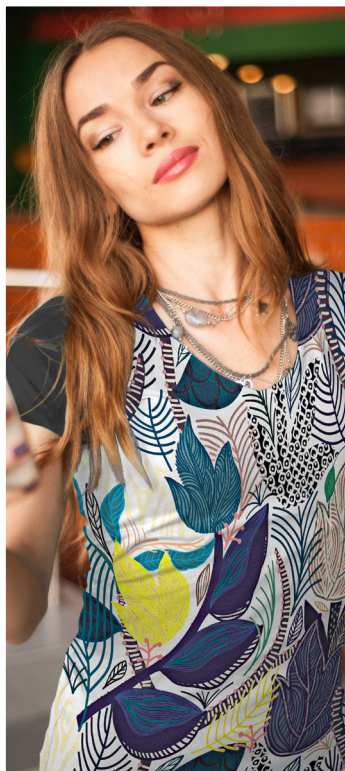
Since 1991, Caldera develops high-quality software for empowering the printing industry serving the graphics and textile markets.

Our software solutions drive large and grand-format devices with a focus on productivity, efficiency and color output.



Markets & Applications

Caldera solutions suit a wide range of markets and applications– including signs, graphics, textiles and industrial printing.



Fashion & Sportswear



Custom Sports Apparel



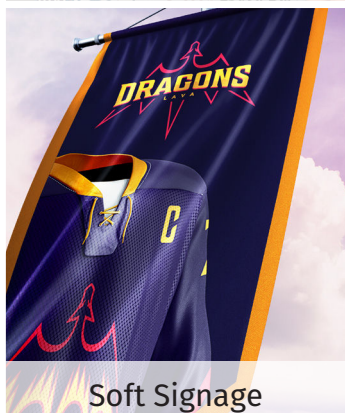
Home Decor



Industrial Printing



Signs & Graphics



Soft Signage

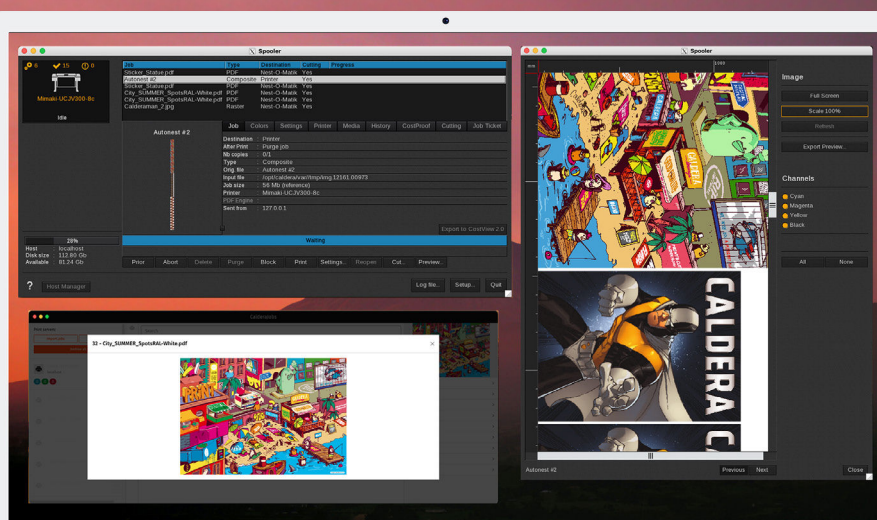


Vehicle Wraps

CalderaRIP

CalderaRIP is a comprehensive RIP software designed to improve productivity and color output. It is the preferred choice of print service providers around the world to drive all their large format printers and cutters. It provides advanced color management, prepress, imaging and processing tools to produce all types of indoor and outdoor applications.

Intuitive and fully scalable, CalderaRIP is ideal for both growing businesses and high-demanding production environments.



Minimal configuration

PC

Linux OS: Debian 9.5 Stretch Official (Mate desktop)
 Processor: Intel Core i3, i5 or i7
 RAM: 4GB or 8GB (recommended)
 Minimum 1GB per core, recommended at least 2GB per core
 HDD: 250GB
Monitor / Video card: 1280x1024 minimum resolution
 Laptops are not recommended for production.

MAC

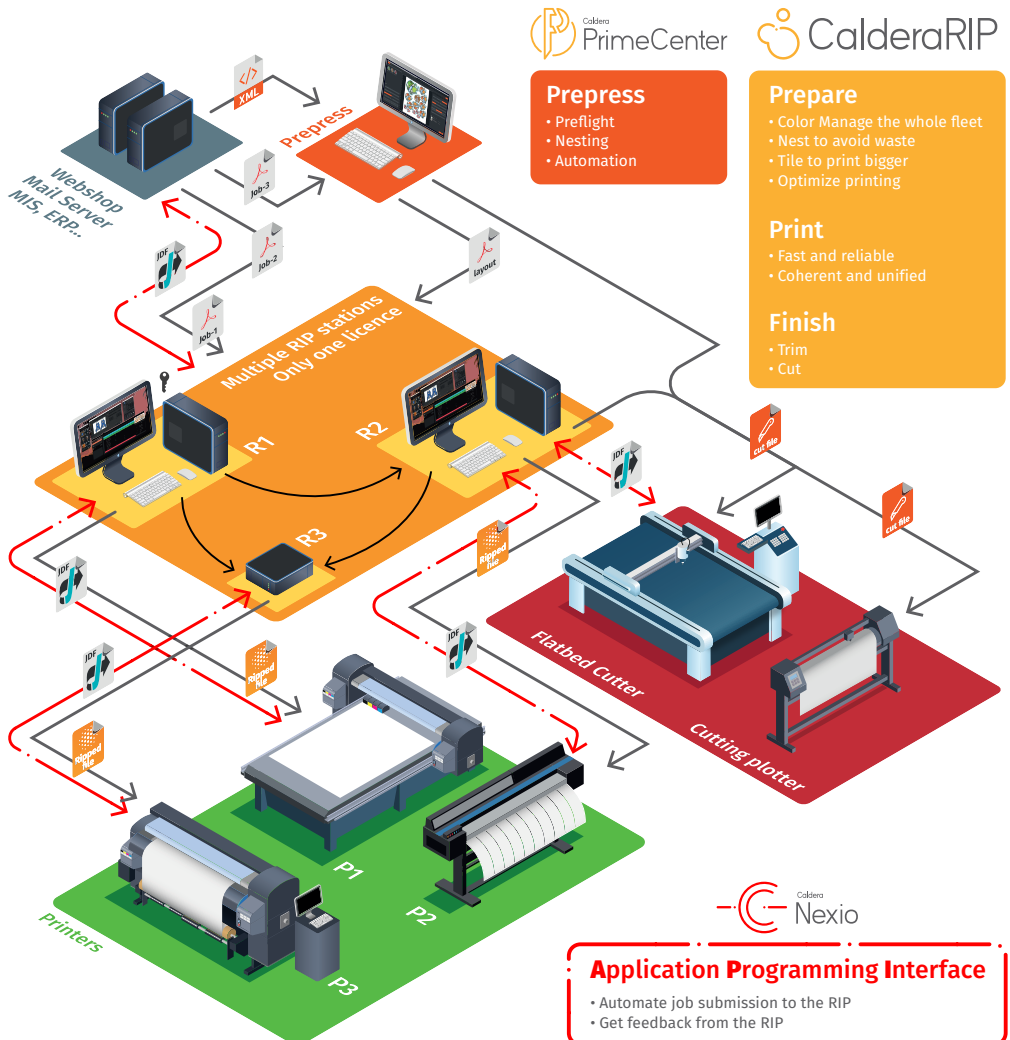
System: macOS 10.13 High Sierra (see compatibility)
Processor: Intel Core i3, i5, i7 based Mac mini, iMac or Mac Pro
MacBooks can be used for demonstration but are not supported by Caldera in production.
PPC based hardware (G5, G4, ...) not supported.
 RAM: 4GB or more. Minimum 1GB per core, recommended at least 2GB per core
 HDD: 250GB
Monitor / Video card: 1280x1024 minimum resolution

Our core technology

Caldera is the pioneer in Client/Server architecture which makes it possible to drive a large fleet of printers and cutters from fewer workstations to increase reliability and performance. Purchase one main RIP license and share it with all your computers (Mac & Linux) in your network. A 'Client' computer requests the devices in your network to compute the jobs, while a 'Server' computer executes the requests. You can add as many Clients and Servers as you need to drive an unlimited number of devices.

Example of configuration in a Caldera Ecosystem:

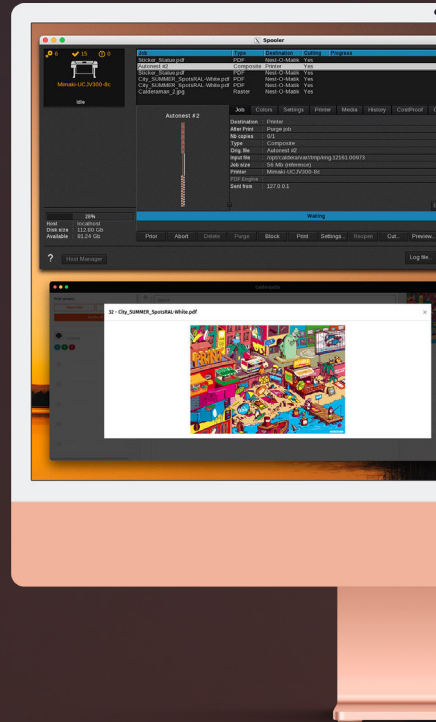
- **R1 manages all printers** and **cutters**, **R1 drives P1**
- **R2 manages P2, P3** and **cutters**, **R2 drives P2** and **cutters**
- **R3 drives P3**



CalderaRIP

The comprehensive,
multi-device RIP solution for
visual communication and
grand-format production

When you're looking for speed, reliability and flexibility in a busy production environment, CalderaRIP can handle all your print and print-to-cut applications. With a host of sophisticated features and intuitive user interface, CalderaRIP is ideal for growing printing businesses and for high-demanding production environments.



Intuitive GUI

CalderaRIP comes with an intuitive user interface with drag-and-drop interactions to facilitate the workflow management.



QuickConfig

Developed to enhance CalderaRIP's user experience, the QuickConfig feature increases job submission speed and flexibility by allowing you to freeze your current Print module configuration in one click.



Smart Hotfolders

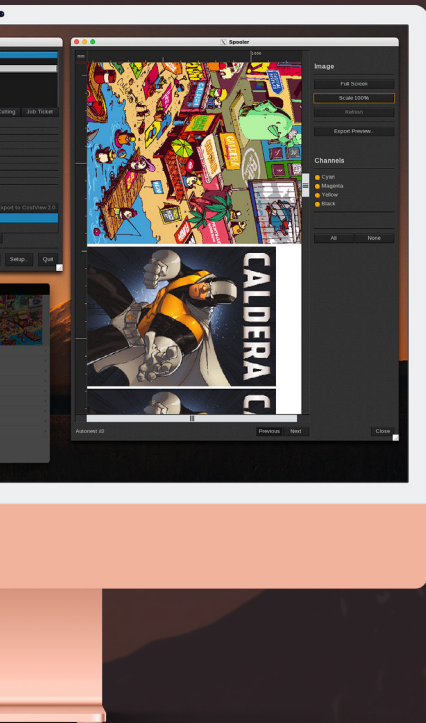
Achieve a faster production workflow using Smart Hotfolders. Thanks to our brand-new parallelization algorithm, you can now prevent production bottlenecks while processing incoming jobs simultaneously to increase your daily production. Benefit from a 35% boost for PDF files and about a 60% boost for TIFF files!



Tiling+

The Tiling+ module allows you to produce very large images and provides tools to format them for your media. Easily divide your images to create wallpapers, canvas or covering images, and save them into templates for easier reproduction. Choose the print order and benefit from assembling guidelines to save time during installation.





Adobe PDF Print Engine 6

Powered by the latest version of the best PDF engine, CalderaRIP ensures you always print the rendering expected by the designer. Benefit from more performance, predictability & consistency than ever before.

64-bit platform

The 64-bit platform combined with reliable OS platforms and powerful Caldera technology offers unrivaled RIP speed.



Color Management with EasyMedia

Achieve perfect colors across multiple devices using our step-by-step wizard for color gamut specifications.



Multi-device Print&Cut

Fully scalable, CalderaRIP can drive your fleet of Print & Cut peripherals for a streamlined workflow.



ContourNesting

Caldera's ContourNesting algorithm detects the image's true shape to deliver smarter image placing and fully optimized layouts to prevent excess media waste. Achieve a more sustainable workflow by saving up to 20% media.



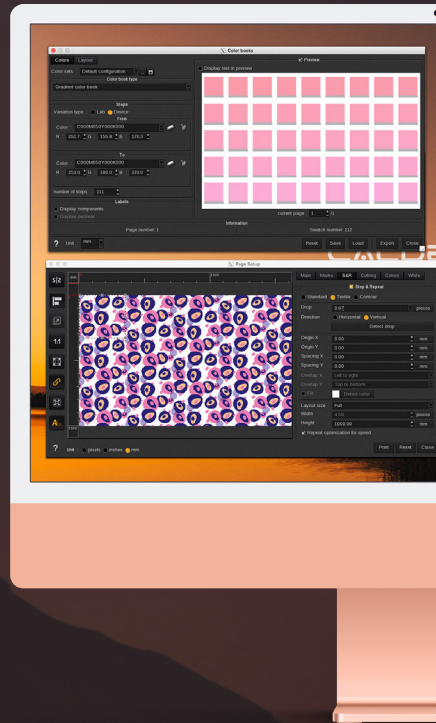
SpotColor

Spot Color matching is a complex process where color refinement with ColorBooks printing and visual assessment can be tedious and time-consuming. Caldera's SpotColor module integrates a variety of ready-to-print spot colors from renowned libraries (Pantone™, HKST™, PPG™, NCS™ and RAL™), and helps you manage your colors easily to match your customer's needs.

TextilePro

The RIP solution for quick, precise and profitable textile printing

Designed for textile applications, TextilePro is a comprehensive RIP solution allowing textile printers to create patterns and variations without errors and waste, while keeping perfect control over their colors throughout the production process. Compatible with all major textile printer manufacturers, TextilePro also features standard-ready color management for quick, precise and profitable textile printing.



RGB Workflow

Carry out print profiles in RGB to achieve richer, deeper blacks and ensure you meet the designer's expectations in terms of color accuracy.



Custom Inkset

Design your own ink configurations from scratch and expand your color gamut to tackle new market trends and applications.



Pattern Repetition

Easily repeat and align patterns for various applications, including wallpapers or home decor elements. Save hours of tedious manual duplication and pattern placement in your design tool thanks to our automatic drop detection system that scans your pattern to find the perfect alignment.



Color Management

Achieve perfect colors across multiple devices and substrates with Caldera's unrivaled ICC color calibration engine and spot color matching.



ColorBooks

Includes a wide range of color books for ensuring consistent colors from design to final production.






RIP packages

CalderaRIP is a versatile solution available in different packages depending on your production. Fully scalable, CalderaRIP can be enhanced with options and additional drivers to match the needs of your business.

 CalderaRIP v18



	Subscription Drive 1-2 printers		Perpetual Drive an unlimited number of printers				
Package	 Caldera VisualRIP	 Caldera VisualRIP+	 Caldera GrandRIP+				
MARKETS	Signage, Visual Communication		Signage, Visual Communication		Visual Communication, Industrial Printing and Packaging		
Edition	Essentials	Pro	Essentials	Pro	Pro	Enterprise	Platinum
# printer drivers included	1 Large	2 Large	1 Large	2 Large	1 Grand	1 Grand	4 Grand
# users included	1	1	1	1	1	1	1
PREPRESS TOOLS	✓	✓	✓	✓	✓	✓	✓
CUT WORKFLOW							
ContourNesting	✓	✓	✓	✓	✓	✓	✓
CutServer	✓	✓	✓	✓	✓	✓	✓
GrandCutServer	Not available	Not available	Option	Option	Option	✓	✓
Trim-O-Matik	Not available	✓	Option	✓	Option	Option	Option
PRODUCTION OPTIMIZATION							
CostProof	Not available	✓	Option	✓	Option	✓	✓
Hardware Acceleration	Not available	Not available	Option	Option	Option	Option	Option
InkPerformer	Not available	Not available	Option	Option	Option	Option	Option
COLOR MANAGEMENT							
X-Rite based ICC Profiling Engine	Not available	✓	Option	✓	✓	✓	✓
Advanced Spot Color Management	✓	✓	✓	✓	✓	✓	✓
Pantone, RAL, HKS Libraries	✓	✓	✓	✓	✓	✓	✓
RGBWorkflow	Not available	Not available	Option	Option	Option	Option	Option
CustomInkset	Not available	Not available	Option	Option	Option	Option	Option
PrintStandardVerifier	Not available	Not available	Option	Option	Option	Option	Option
AUTOMATION							
Unlimited Hotfolders	Not available	✓	✓	✓	✓	✓	✓
Nexio	Option	Option	Option	Option	Option	Option	Option



User benefits

POWERFUL FILE PREPARATION

- Manage complex jobs (Advanced Tiling)
- Ease preparation of big batches (ContourNesting, Step&Repeat)
- Simple drag & drop interface

PERFECT COLOR OUTPUT

- Advanced ICC profile creation (EasyMedia) based on X-Rite technology for accurate, consistent color output across media and printers
- Spot color matching and replacement
- Spot color libraries (Pantone, RAL, HKS, NCS)

BETTER PROFITABILITY & COST CONTROL

- Reduce ink consumption (optimized profiles)
- Reduce media waste (Nesting, HQ preview)
- One license to drive your fleet of printers and cutters
- Enhanced productivity (Multi-queue spooler)

UNRIVALED PERFORMANCE

- Automate print & cut jobs (presets)
- Ensures accurate rendering of your designs
- Save valuable time across your production
- Less training time for your operators

THE MOST RELIABLE RIP ON THE MARKET

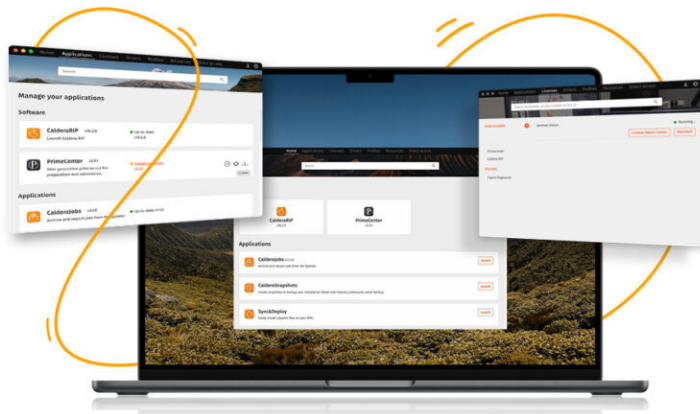
- Embeds the latest Adobe PDF Print Engine
- Powerful 64-bit platform
- Stable, reliable OS (macOS, Linux)

CalderaDock

Included tools

CalderaDock is the first step of the Caldera installation process.

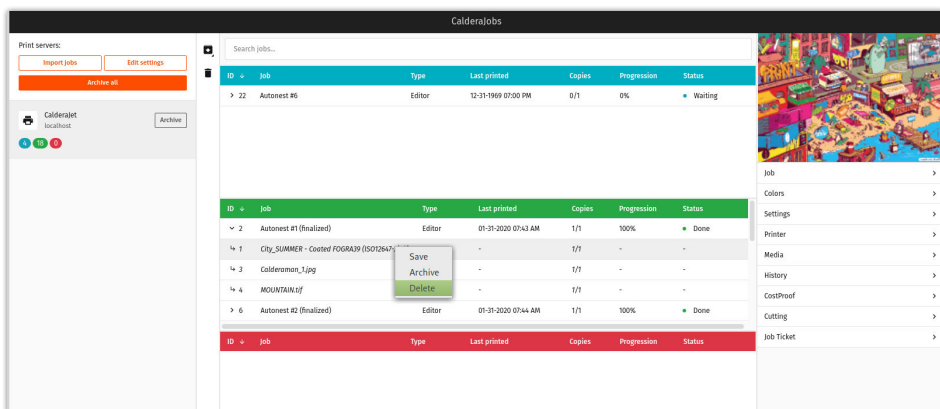
Use CalderaDock to manage the licenses and installation of all your Caldera solutions— and to access a wide range of resources.



CalderaJobs

Keep control of your production fleet

Included with CalderaRIP, CalderaJobs is an intuitive interface providing a detailed view of all your jobs to save valuable time in production. Easily find, preview, archive, delete or (re)print any job at any time. CalderaJobs is available on Linux, macOS and Windows.



Master all your colors

CustomInkset to customize your ink configurations

In textile and industrial printing applications such as ceramics, wood floors or bathroom tiles, market trends make it necessary to go beyond what CMYK alone can achieve. With CustomInkset, you can design your own ink configurations from scratch and discover new shades of printed colors. Insert your cartridges, choose which ones will be used in the mixes (process inks) and which ones will be handled separately (spot inks).



PrintStandardVerifier to check the conformity of your prints

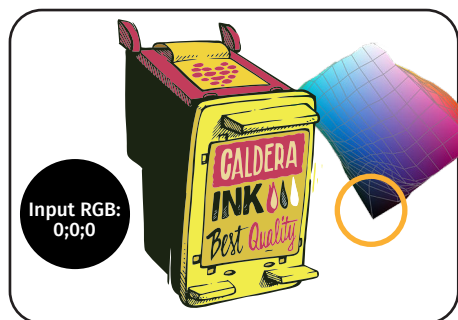
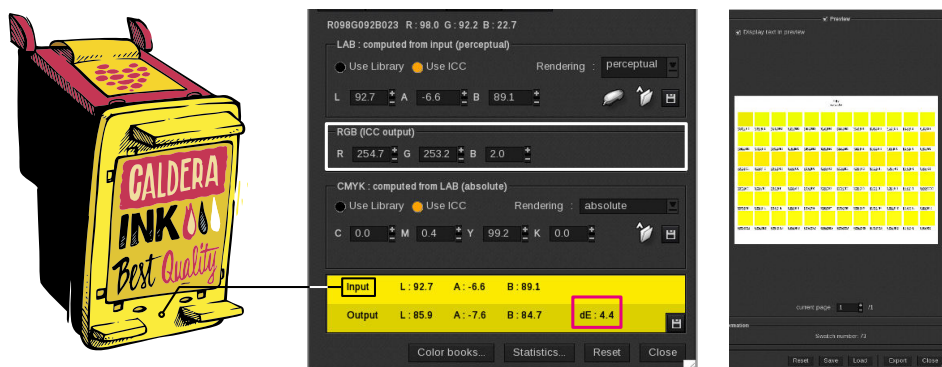
PrintStandardVerifier allows you to carry out conformity checks of your printing processes in terms of color consistency. When printing for large accounts, meeting international standards for color consistency is crucial— and PrintStandardVerifier embeds professional standards and specifications that are widely recognized across the graphic communication industry: Fogra, G7, Idealliance & ISO.



RGBWorkflow to achieve richer, deeper blacks

Achieving a rich, deep black color is one of the biggest challenges faced by digital printers working alongside designers, especially when it comes to textile, photography or backlit media. As a rule, designers are working within the RGB color space while printers work in CMYK. Integrating a RGB workflow into the printing process makes it possible to reproduce more accurate blacks.

RGBWorkflow allows digital printers to carry out print profiles in RGB. By using the same profile from creation to production, the file undergoes less ICC conversions which could deteriorate the quality of your colors.



CMYK Workflow



RGB Workflow (Black mixing)

Master your production costs

CostProof

CostProof calculates job-related costs based on similar jobs printed in the past or based on the ripped data of your jobs. Deliver more accurate quotes to your customers and improve your cost management to stay competitive.

The image shows the CostProof software interface. A 'CostProof setup' dialog box is open, allowing users to configure cost calculation settings. A green arrow points from the 'CostProof' tab in the main window to this dialog box.

CostProof setup

Ink (Resolution: 720)

Drop size (in pl) : 5.2 11.4 **21.8**

Cost (per liter) : Compute...

Media (Epson Enhanced Matte Paper)

Cost (per square feet) : Compute...

☒ Use Printed area to compute cost

☐ Use Sheet/Roll area to compute cost

Cancel OK

Main Window:

Host Manager: 69%
Host : localhost
Disk size : 172.44 Gb
Available : 54.00 Gb

Job	Type	Destination	Progress
Shadows2.jpg Optimized	Ripped file	00:05:11	1 0
Shadows2.jpg Normal	Ripped file	00:03:47	1 0
Shadows2.jpg Optimized	Ripped file	00:03:35	1 0
Shadows2.jpg Normal	Ripped file	00:03:40	1 0
Shadows2.jpg	Ripped file	00:04:08	1 0

Job Details: Shadows2.jpg Optimized

Job	Colors	Settings	Printer	Media	History	CostProof	Cutting	Job Ticket
Cyan	29.54 ml	5.02 EUR						
Magenta	45.83 ml	7.79 EUR						
Yellow	33.64 ml	5.72 EUR						
Black	65.03 ml	11.06 EUR						
	7.83 ml	1.33 EUR						
	20.97 ml	3.55 EUR						
	7.83 ml	1.33 EUR						
Total	210.57 ml	35.80 EUR						
Media	15.50 m²	81.38 EUR						

Cost saved: 35%

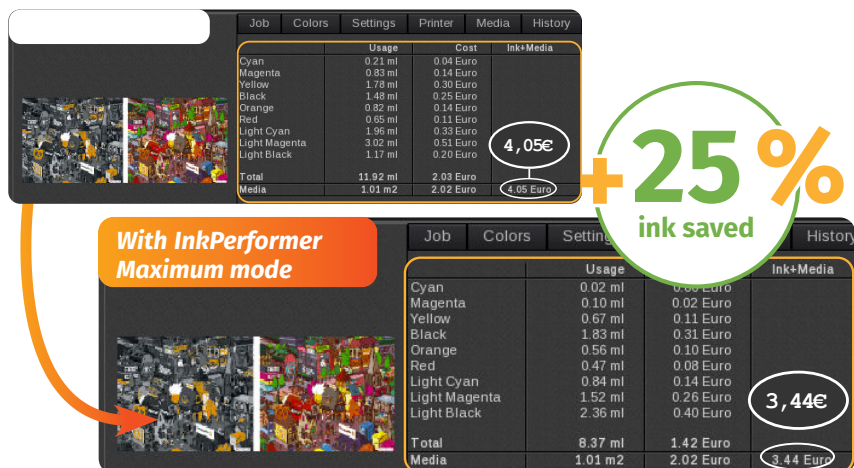
Finished

Log file... Setup... Quit

Optional Production Optimization features

InkPerformer for smart ink savings

No need to redo your ICC profiles to save ink! Once activated, InkPerformer automatically calculates a new color combination to reduce the amount of ink printed on the substrate. Fast and intuitive, InkPerformer improves your color rendering while increasing your margins.



Features

- ✓ 4 ink-saving levels
- ✓ Ink cost calculator
- ✓ Simulation of ink consumption
- ✓ Save InkPerformer settings in presets



Benefits

- ✓ Print more accurate colors
- ✓ Print more with less ink
- ✓ Increase your margins
- ✓ Reduce costs and ecological footprint

Average ink savings with InkPerformer

FORMAT (INCHES)	FORMAT (CM)
24 x 36	60 x 90
27 x 40	70 x 100
40 x 60	100 x 150

**Ink savings
"MAXIMUM"
mode**

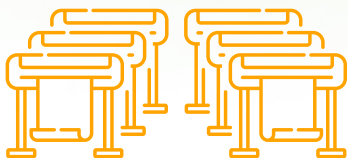
25%

InkPerformer is sold per printer driver. 1 license for 1 printer is included with CalderaCare.

Master your speed

Hardware Acceleration to boost your RIP performance

Once enabled, Hardware Acceleration lets you take advantage of your computer's full capacity to speed up ripping and printing times. Process files with greater speed and efficiency to deliver all your jobs on time, and achieve a fast return on investment.



**RUN MORE PRINTERS WITH
FEWER COMPUTERS**



**SPEED UP YOUR
PRODUCTION**



SAVE MONEY ON HARDWARE



INCREASE YOUR ROI

For an efficient print-to-cut workflow

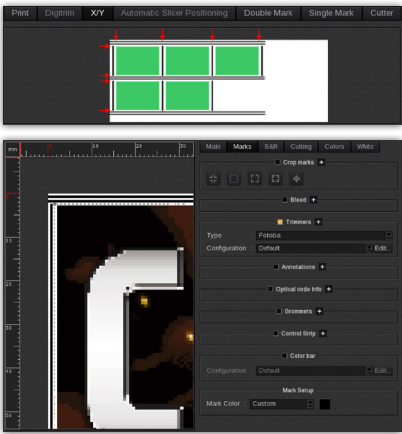
CutServer & GrandCutServer to unify your print-to-cut workflow




No need for a separate solution to manage your cutting operations! CalderaRIP is compatible with all the industry-leading cutting devices on the market. Drive then with CutServer or GrandCutServer to streamline your print-to-cut workflow. Easily manage cut contours, cut and positioning marks, manage multiple contours in a single file, and generate machine-specific files for each job for greater accuracy.

CutServer is recommended for roll cutters and automatic line cutting devices, while **GrandCutServer** is recommended for flatbed cutters and controllers.

Trim-O-Matik to automate your trimming workflow

Perfect for cutting rectangular shapes at unrivalled speed, trimmers are the solution to speed up and scale up your production. Generate trim marks to save time and cut rectangular shapes at unrivalled speed.



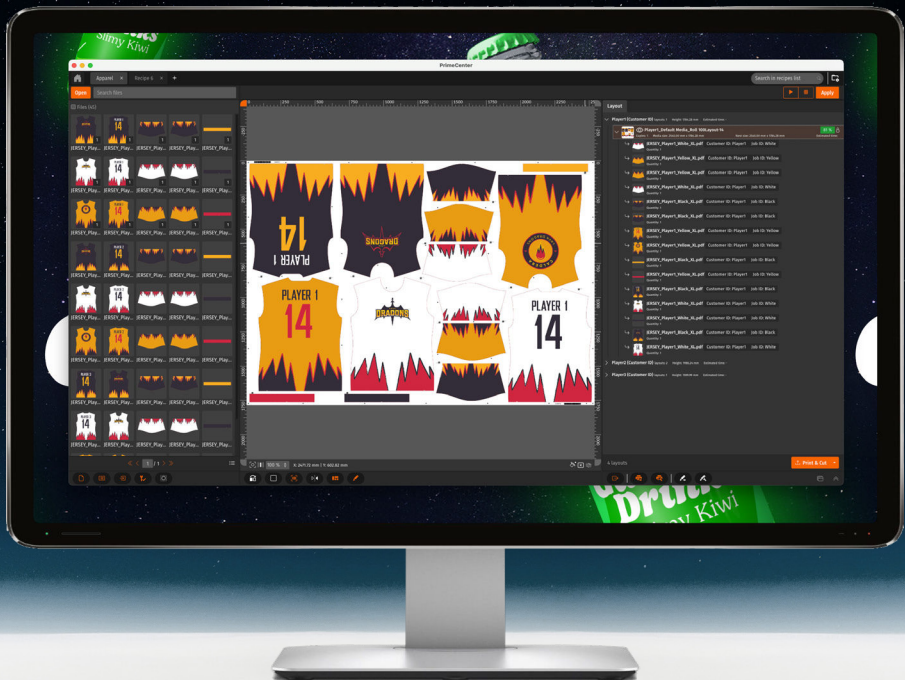
Package	 Caldera VisualRIP		 Caldera VisualRIP+		 Caldera GrandRIP+		
MARKETS	Signage, Visual Communication		Signage, Visual Communication		Visual Communication, Industrial Printing and Packaging		
Edition	Essentials	Pro	Essentials	Pro	Pro	Enterprise	Platinum
CUT WORKFLOW							
ContourNesting	✓	✓	✓	✓	✓	✓	✓
CutServer	✓	✓	✓	✓	✓	✓	✓
GrandCutServer	Not available	Not available	Option	Option	Option	✓	✓
Trim-O-Matik	Not available	✓	Option	✓	Option	Option	Option

Please refer to our website for cutter compatibility: <https://www.caldera.com/supported-devices/>

For faster, more profitable file preparation

PrimeCenter is a prepress software designed to simplify the preparation of print & cut files. Located upstream of your production, PrimeCenter checks, corrects, sorts, groups and prepares files for production.

PrimeCenter is compatible with any RIP software, and any cutter controller who supports the PDF formats.



Key features

- ✓ Automatic preflight checks
- ✓ Powerful True-shape nesting
- ✓ Advanced cutting options
- ✓ Seamless double-sided printing

Key advantages

- ✓ Prepare jobs 3 times faster
- ✓ Cut down media waste by 20%
- ✓ Reduce time spent on repetitive tasks
- ✓ Automate your prepress

PrimeCenter packages

Discover our annual subscription plans

	Essentials	Pro	Max
	The manual version	The semi-automatic version	The automatic version
Users	1	1	3
Compatible with any RIP software and cutter supporting PDF format	✓	✓	✓
Integration with CalderaRIP & Zünd Cut Center ¹	✓	✓	✓
Access to knowledge base and technical support (HelpDesk)	✓	✓	✓
Service Level Agreement (SLA) ²		✓	✓
RECIPES			
Apply recipes	Manual	Manual or Automatic	Manual or Automatic
Recipe queue		✓	✓
Simultaneous automatic recipes ³		1	10
INPUT			
Import files	Drag & Drop	Drag & Drop, Manual or Hotfolders	Drag & Drop, Manual or Hotfolders
Extract metadata from input filename		✓	✓
Global hotfolder		✓	✓
Import and extract metadata from XML job ticket			✓
PREFLIGHT & LAYOUT			
INCLUDED IN ALL PLANS			
<div> <div>Layout features</div> <ul style="list-style-type: none"> • Rectangular and True-Shape Nesting • Canvas and True-Shape Print Bleed • Annotations (Barcode 39, QR Code, texts, metadata) </div> <div> <ul style="list-style-type: none"> • Double-sided printing • Trimboxes with padding • Add cut marks • Mirroring </div> <div> <div>Standard preflight checks and fixups (Callas profiles)</div> <ul style="list-style-type: none"> • PDF verification and conversion • Vectorize fonts • Generate cut contours • Add crop marks </div> <div> <ul style="list-style-type: none"> • Add grommets • Split for re-nest • Etc. </div>			
Application of preflight checks & fixups to input files	Manual	Manual or Hotfolders	Manual or Hotfolders
Apply multiple checks & fixups to input files	✓	✓	✓
Add Tear-Off annotations	✓	✓	✓
Apply fixups to output files		✓	✓
Add color under marks (fixup)		✓	✓
Ganging (nesting & sorting via specific metadata)		✓	✓
Automatically generate ready-to-export layouts		For manual export	For manual or auto export
OUTPUT			
Export ready-to-print/cut PDF files	Manual	Manual or Hotfolders	Manual or Hotfolders
Crop output PDF to printed layout	✓	✓	✓
Output ZCC files via direct data transfer	✓	✓	✓
Custom output naming	✓	✓	✓
PDF reports		✓	✓
Export metadata in ZCC files ⁴		✓	✓
Automatically export ready-to-print/cut PDF files			✓

1. ZCC version 3.3 minimum is required for full integration with PrimeCenter.

2. Service Level Agreement – Guaranteed response within 2h/4h/8h depending on the severity of the issue.

3. Users of PrimeCenter Essentials, Pro and Max can create an unlimited number of recipes. PrimeCenter Pro can only process 1 recipe at a time, while PrimeCenter Max can process up to 10 recipes simultaneously. Additional automatic recipes can be purchased as an option if needed.

4. Requires Zünd Cut Center version 3.3 minimum.



www.caldera.com/primecenter

Spectrophotometers for color measurement

Spectrophotometers are a must-have for matching specific colors in your production. One generic profile cannot reproduce accurate colors for all the different inks-media-printer combinations available on the market. Measure colors on physical samples, and create your own ICC profiles with CalderaRIP to improve color rendering and homogeneity.



x-rite
i1Pro3 Plus



Caldera
TotalColor qb
-Digital Press Edition-



Caldera
TotalColor qb



Caldera
TotalColor qb
—Textile Edition—

Type	Manual	Automatic	Automatic	Automatic
Connectivity	USB	USB and Ethernet	USB and Ethernet	USB and Ethernet
Conditions ¹	M0, M1, M2, M3	M0, M1, M2, M3	M0, M1, M2, M3	M0, M1, M2, M3
Aperture	Ø 8 mm	Ø 2-6 mm	Ø 2-6-8 mm	Ø 2-6-8 mm

FEATURES

Linearization	•	•	•	•
ICC profiles	•	•	•	•
Sport colors measurement	•	•	•	•

SUPPORTED MEDIA

Flexible	•	•	•	•
Rigid	•	•	•	•
Opaque	•	•	•	•
Transparent	-	•	•	•
Textile fabrics ²	-	-	-	•
Maximum thickness	∞	20mm	20mm	20mm

TOTALCOLOR QB EXCLUSIVE FEATURES

Measurement of fluorescent inks	•	•
D50 illuminations for backlit measurements	•	•
Camera for instant automatic positioning	•	•
Camera works even with distorted textile prints	-	•
Electrostatic textile sample holder with a frame and sticky mat designed for stretched textile	-	•
Air blowing system to prevent textile fibers contaminating the optics	-	•

¹Measurement Conditions: M0 = undefined UV | M1 = D50 UV | M2 = UV filter | M3 = polarization filter

²Cotton, silk, polyester, viscose, wool, linen and mixed fabrics



x-rite i1iO3 (Compatible with CalderaRIP Version 14 or newer.)

Automated XY scanning table to supplement the i1Pro3

- Allows automated target reading with an i1Pro3 (not included)
- Can be purchased alone or as a bundle with the i1Pro3

Pre-installed RIP stations for an easy setup

- 3 solutions depending on your needs (power & production volume)
- Comes with Linux OS & CalderaRIP software pre-installed
- Grants you access to 'Dell ProSupport' worldwide
- Includes a restoration USB stick



CALDERA C1

Drives between 1 and 2
Wide drivers



CALDERA C2

Drives between 1 and 2 Large
drivers or 1 Grand driver



CALDERA C3

Drives between 1 and 2
Grand drivers

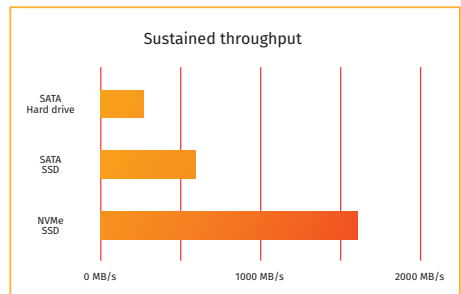
3 years of DELL ProSupport included

Phone support 24h/24 – 365d/year
On site intervention, day after
call (ProSupport D+1)



Non-Volatile Memory Express (NVMe)

Interface for SSD on PCIe
•4x times faster than SATA SSD



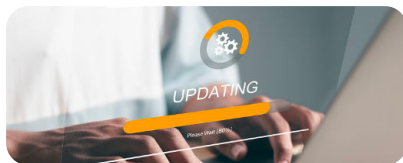


CalderaCare is a set of additional, exclusive features including all major upgrades, premium training content and priority access to our technical support. A subscription to CalderaCare ensures CalderaRIP is up to date with the latest version and enhancements.



Guaranteed support response times

When you register a support request, the priority and response times are guaranteed within 2h for a critical issue, 4h for a major issue, and 8h for a minor issue. CalderaCare supports multi-printer production sites.



All the latest versions and updates

CalderaCare includes all CalderaRIP upgrades (major & minor) and grants you access to exclusive features to expand print & cut possibilities.



Unlimited access to online trainings

Our online training sessions are the best way to get fast and effective training on CalderaRIP modules. We provide courses on CalderaRIP basics, color management, and more.

What's included in CalderaCare

	Without CalderaCare	CalderaCare
WorkSpace customer portal	✓	✓
Priority support with SLA ²	✗	✓
Remote Support	✗	✓
CalderaRIP major upgrades	✗	✓
Exclusive CalderaCare features (SmartImport, REST API)	✗	✓
1 License of InkPerformer included ³	✗	✓
Online trainings	Pre-payment required	Free, unlimited access
"Large" Driver swaps	✗	✓
"Grand" Driver swaps	x	Available at a reduced fee

¹ CalderaCare is an annual subscription contract. CalderaCare subscriptions are automatically renewed every year.

Cancellation requests must be addressed via a written notice to sales-team@caldera.com

at least 30 days prior to the contract expiration date.

² Service Level Agreement— Guaranteed response times within 2h for a critical issue, 4h for a major issue, and 8h for a minor issue.

³ One license of InkPerformer works for one printer.

Online trainings

Our webinars are the perfect alternative to get fast and effective training on CalderaRIP modules. Our trainers will guide you through the basics of CalderaRIP, color management, print-to-cut workflows, and more. Online trainings are exclusive for CalderaCare subscribers.

With our range of online training sessions, we aim to make live training even more accessible to our customers. Attending our online webinars is the best way to get fast and effective training on Caldera modules, and anyone can participate from their office, their home or while they are away on business, without the inconvenience of travelling. Registrations are open to all partners and customers with an active subscription to CalderaCare*.



Available trainings



CALDERA
BASICS



TILES
MANAGEMENT



PRINT & CUT
WORKFLOW



COLOR
MANAGEMENT



SPOT COLOR
MANAGEMENT

View the training calendar and register directly on workspace.caldera.com

We can also provide customized webinars tailored to your needs and agenda. For any request, please reach out to our sales representatives via caldera.com/contact

*Registrations to live online trainings are only available for Caldera partners and customers with an active subscription to CalderaCare. For customers without a CalderaCare subscription, a pre-payment is required.

Our partners

We support more than 1,900 printers and cutters

Caldera works closely with manufacturers to develop solutions that meet the needs of the large-format printing industry.

OEM partners



Supported manufacturers



Strategic partners



Visit our website for more information about our supported devices.

Our customers

Over 15000 print professionals rely on Caldera

We are constantly innovating and expanding our knowledge to help our customers tackle new markets.

Sign, digital graphics and visual communication

Argentina: Gigantografica, Omnigraphics

Australia: Active Displays, Cactus Imaging, Catalyst, CMYK Hub, GSP Print, Prima

Austria: Arian, Bellutti, Druck.at, Gradwohl, Reproteam Hansbauer, Salon Iris, Trevision

Belgium: Dael Printing, Dioss, Hecht, Supercolor, XL Reklame, Ye Print

Brazil : Dinamica, Pigmentum

China: Baicheng, Dong Sheng

Advertising: Xiamen Art Printing

Colombia: Grupo Mercadeo

Czech Republic: Copy General, Top Advert

Denmark: LaserTryck

Egypt : Five Stars

France: Comptoir de l'Image, Dodeka, DS Impression, Picto, France Affiches, Nice Colors, Ad Visuel, Mangold, Ceanothe, TopColor, Komosol Groupe

Germany: CeweColor, Copyzentrum Passau, DieDruckerei, FlyerAlarm, Niggemeyer, PPS Imaging, Procedes Staudigl

Hong Kong: Art One Production, Bannershop, Professional Production, Tri Color

Hungary: Eclipse Print, OSG

Italy: Limonta, Pixart Printing, Sisma Italia

Ireland: Horizon Graphics, McGowans

Japan: Daido, Graphic, Sign Artec, Tokyo Lithmatic

Korea: Dain Communication, Gaunet

Malaysia: Comcolor, Pixio

Mexico: Pancarta, Print

New Zealand: Broderick Print, Juggernaut, Leeding Signs, Mirage, Print House, Boston Digital,

Image Center, Original Screen

Netherlands: Big Impact,

Piet Hovenaars, Van Straaten,

Yoursurprise

Norway: Allkopi, Megaprint, SW Trykk

Peru: Litho Laser, Metacolor

Poland: Bluejet, City Service,

Consalnet, FF Linea, Klonex, Topcan

Romania: Art Match, BigPrint

Russia: Arial, Fotolab, LIGO

Serbia: DPC, NS Plakat

Singapore: Film Screen, Siner Graphic

Slovakia: Bittner, Double P

Slovenia: V-Tisk

South Africa: Beith Digital, Bidvest, Hirt&Carter, Prismaflex, ScreenLine, Tali Digital

Spain: Fragma Espacios, Kendu, Marc Marti, MARGI, OEDIM, Stikets

Sweden: Big Image, Billes Tryckeri, Brand Factory, Formpress,

Gigantprint, Storbildsbolaget

Switzerland: Comro, Christinger,

Makro Art, Plotfactory, Richnerstutz

Taiwan: Forms Surface,

Gain How Printing,

Group Color Digital Image

Turkey: HKS Reklam

UK: AST Signs, Delta Display, Dominion, Icon Print, Imageco,

Mediaco, Oasis Graphics,

Service Graphics

United Arab Emirates: Reprotronics

USA: Big Mountain Imaging,

Brand Imaging Group, Coloredge,

Ferrari Color, Firehouse Image Center,

NuSignSupply, Parallax, Pictura,

SignZone, Vision Integrated Graphics.

Textile Printing

Austria: Fahren Gartner, Typico

Belgium: Bioracer, Visix

Bulgaria: PNG

China: Huzhou Angye Digital Industry

France: Doublet, Duo Display, ET Cernay, Faber France, Mediama,

Ranitex, TIL/Deveaux

Germany: Frankfurter Fahren, Sachsen Fahren

Italy: Fiorenzo Sports

Netherlands: Faber Expose, Van Straaten

Poland: Flagowa Kraina,

Voigt Promotion

Romania: Rofobit

UK: Cestrian, Grafenia,

Ultima Displays

USA: SignZone

Industrial Printing

Austria: Digital Art Floors, Kaindl

Bangladesh: Naf Group

Belgium: Wollux

France: Adhetec, Euro PLV, GPS Packaging/ Cartonnages de Gascogne, TIL

Germany: DS-Smith, Villeroy & Boch

Hungary: DS-Smith

India: Vennar Ceramics

Indonesia: Platinum Ceramics, Textile On Demande

Japan: Goto Iron Works, Toppan

Korea: Samyoung Industrial

Czech Republic: Solpap

Malaysia: Hans Printing & Packaging

New Zealand: Textiles Alive

Netherlands: Sorbo

Peru: Ceramics Kantu

Singapore: Sunway Woodcraft Construction, Tangs, Vim Technology & System Engineering

Sweden: DS-Smith

USA: Ideon Packaging

UK: DS-Smith, Liquid Lens



Our awards

Caldera is an award-winning software solution recognized by industry professionals and magazines

Wide-Format Imaging Readers Choice Awards

10x Top product RIP software
4x Top product workflow software
3x Top product color management software
3x Best overall product
Top product Web-to-Print 2018

Viscom

Best software award 2013
Best innovative product software 2012
Best innovative green product 2012

Digital Printing and Imaging Association

8x Outstanding service award
5x Best Software Product of the Year

Image Reports

Angel Awards - RIP of the year 2007

Follow us on social media!



CALDERA

a **DOVER** company

1 rue des Frères Lumière - P.A. d'Eckbolsheim - 67038 Strasbourg Cedex 2 - France
www.caldera.com - Tel. +33 388 210 000 - contact@caldera.com

Copyright 2024 Caldera. All trademarks, logos and brand names mentioned in this publication are the property of their respective owners. All images and photographs here featured are the property of their respective owners.

Cover photo by Atul Vinayak. Some images has been designed using resources from Freepik.com.

Caldera reserves the right to modify software specifications and the content cited in this document without prior notice.