

EN



Print Software Driven by Innovation

# ABOUT CALDERA

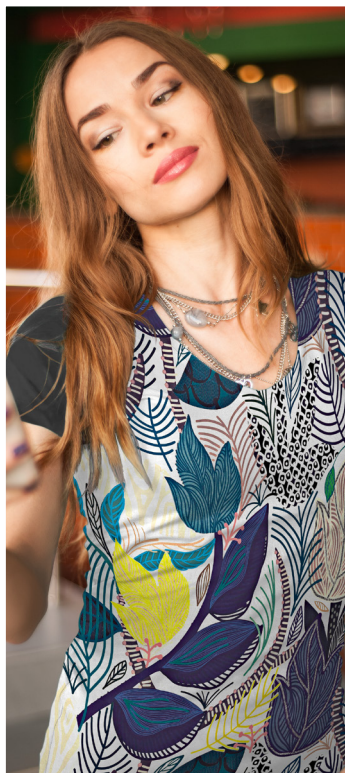
Since 1991, Caldera has been developing high-quality software for empowering the digital print & cut industry serving the graphics and textile markets.

Our software solutions drive large and grand-format devices with a focus on productivity, efficiency and color management in a controlled production workflow.



# Markets & Applications

Caldera's RIP and workflow solutions can be used alone or in combination to suit a wide range of markets and applications – including signs, graphics, textiles and industrial printing.



Fashion & Sportswear



Custom Sports Apparel



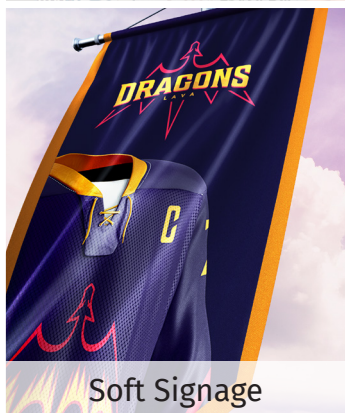
Home Decor



Industrial Printing



Signs & Graphics



Soft Signage



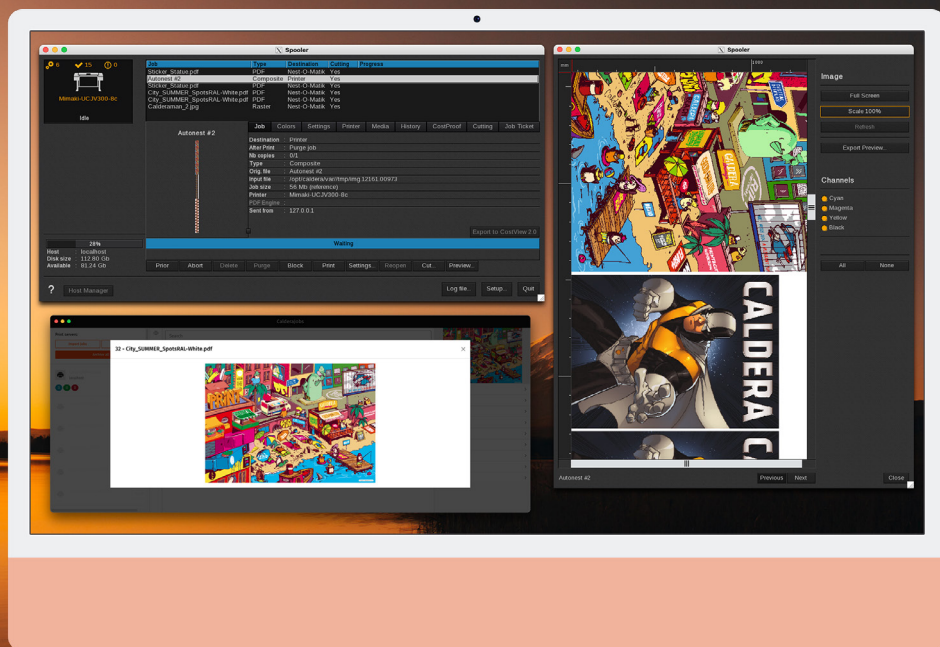
Vehicle Wraps

# CalderaRIP

CalderaRIP has been designed to help digital printing professionals consolidate their production by using a single RIP software to drive all their printers and cutters.

Our suite of award-winning, production-oriented solutions provide color management, prepress, imaging and processing features for large and grand-format devices. CalderaRIP is the only software on Mac and Linux capable of driving over 1,600 printers and cutters to help you save time, ink and media while delivering high-quality results.

Our industry-leading solutions for printing and cutting workflows are the preferred choice of major players in the large-format printing industry worldwide.



## Minimal configuration

### PC

Linux OS: Debian 9.5 Stretch Official (Mate desktop)  
Processor: Intel Core i3, i5 or i7  
RAM: 4GB or 8GB (recommended)  
Minimum 1GB per core, recommended at least 2GB per core  
HDD: 250GB  
Monitor / Video card: 1280x1024 minimum resolution  
Laptops are not recommended for production.

### MAC

System: macOS 10.13 High Sierra (see compatibility)  
Processor: Intel Core i3, i5, i7 based Mac mini, iMac or Mac Pro  
**MacBooks can be used for demonstration but are not supported by Caldera in production.**  
**PPC based hardware (G5, G4, ...) not supported.**  
RAM: 4GB or more. Minimum 1GB per core, recommended at least 2GB per core  
HDD: 250GB  
Monitor / Video card: 1280x1024 minimum resolution

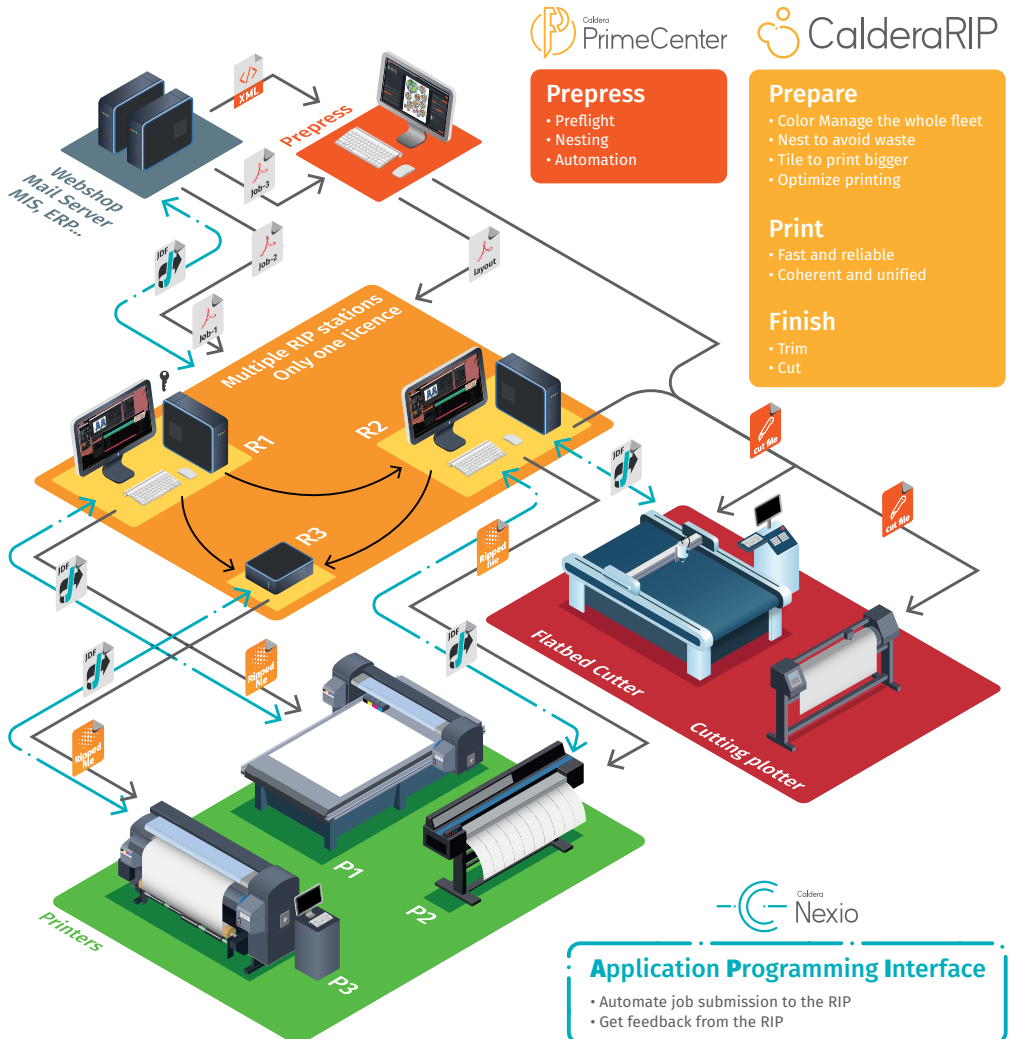
# Our core technology

Caldera is the pioneer in Client/Server architecture which makes it possible to drive a large fleet of printers and cutters from fewer workstations to increase reliability and performance.

Purchase one main RIP license and share it with all your computers (Mac & Linux) in your network. A 'Client' computer requests the devices in your network to compute the jobs, while a 'Server' computer executes the requests. You can add as many Clients and Servers as you need to drive an unlimited number of devices.

## Example of configuration in a Caldera Ecosystem:

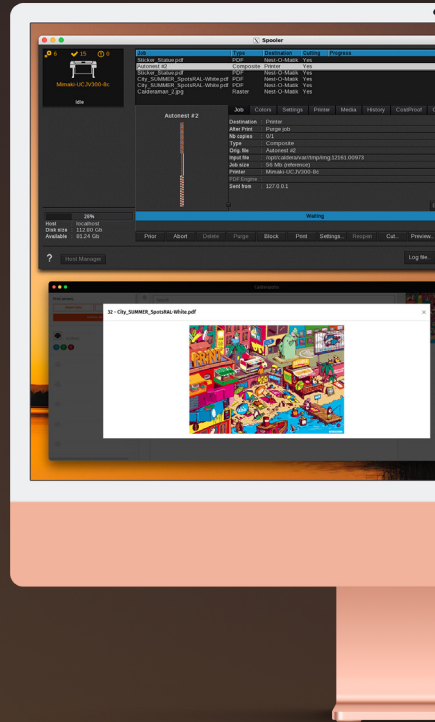
- **R1 manages all printers** and **cutters**, **R1 drives P1**
- **R2 manages P2, P3** and **cutters**, **R2 drives P2** and **cutters**
- **R3 drives P3**



# CalderaRIP

The comprehensive, multi-device RIP solution for visual communication and grand-format production

When you're looking for speed, reliability and flexibility in a busy production environment, CalderaRIP can handle all your print and print-to-cut applications. With a host of sophisticated features and intuitive user interface, CalderaRIP is ideal for growing printing businesses and for high-demanding production environments.



## Intuitive GUI

CalderaRIP comes with an intuitive user interface with drag-and-drop interactions to facilitate the workflow management.



## QuickConfig

Developed to enhance CalderaRIP's user experience, the QuickConfig feature increases job submission speed and flexibility by allowing you to freeze your current Print module configuration in one click.



## Smart Hotfolders

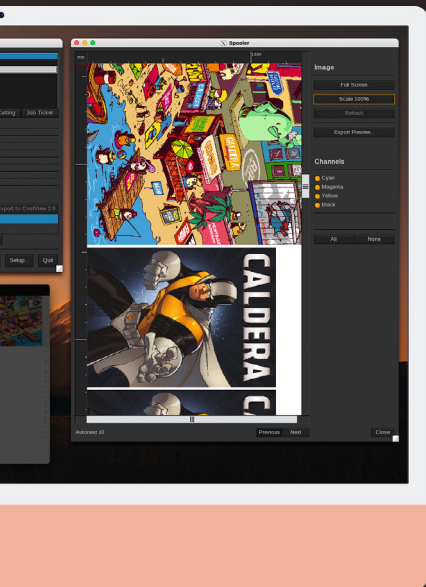
Achieve a faster production workflow using Smart Hotfolders. Thanks to our brand-new parallelization algorithm, you can now prevent production bottlenecks while processing incoming jobs simultaneously to increase your daily production. Benefit from a 35% boost for PDF files and about a 60% boost for TIFF files!



## Tiling+

The Tiling+ module allows you to produce very large images and provides tools to format them for your media. Easily divide your images to create wallpapers, canvas or covering images, and save them into templates for easier reproduction. Choose the print order and benefit from assembling guidelines to save time during installation.





## Adobe PDF Print Engine 6

Powered by the latest version of the best PDF engine, CalderaRIP ensures you always print the rendering expected by the designer. Benefit from more performance, predictability & consistency than ever before.

## 64-bit platform

The 64-bit platform combined with reliable OS platforms and powerful Caldera technology offers unrivaled RIP speed.



## Color Management with EasyMedia

Achieve perfect colors across multiple devices using our step-by-step wizard for color gamut specifications.



## Multi-device Print&Cut

Fully scalable, CalderaRIP can drive your fleet of Print & Cut peripherals for a streamlined workflow.



## ContourNesting

Caldera's ContourNesting algorithm detects the image's true shape to deliver smarter image placing and fully optimized layouts to prevent excess media waste. Achieve a more sustainable workflow by saving up to 20% media.



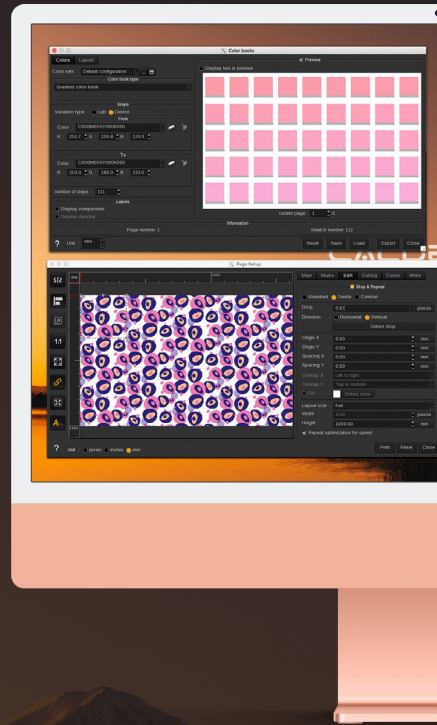
## SpotColor

Spot Color matching is a complex process where color refinement with ColorBooks printing and visual assessment can be tedious and time-consuming. Caldera's SpotColor module integrates a variety of ready-to-print spot colors from renowned libraries (Pantone™, HKST™, PPG™, NCS™ and RAL™), and helps you manage your colors easily to match your customer's needs.

# TextilePro

The RIP solution for quick,  
precise and profitable  
textile printing

Designed for textile applications, TextilePro is a comprehensive RIP solution allowing textile printers to create patterns and variations without errors and waste, while keeping perfect control over their colors throughout the production process. Compatible with all major textile printer manufacturers, TextilePro also features standard-ready color management for quick, precise and profitable textile printing.



## RGB Workflow

Carry out print profiles in RGB to achieve richer, deeper blacks and ensure you meet the designer's expectations in terms of color accuracy.



## Custom Inkset

Design your own ink configurations from scratch and expand your color gamut to tackle new market trends and applications.



## Pattern Repetition

Easily repeat and align patterns for various applications, including wallpapers or home decor elements. Save hours of tedious manual duplication and pattern placement in your design tool thanks to our automatic drop detection system that scans your pattern to find the perfect alignment.



## Color Management

Achieve perfect colors across multiple devices and substrates with Caldera's unrivaled ICC color calibration engine and spot color matching.



## ColorBooks

Includes a wide range of color books for ensuring consistent colors from design to final production.






# RIP packages

CalderaRIP is a versatile solution available in different packages depending on your production needs. Create a tailored configuration by choosing the appropriate solution, adding as many users as necessary and adjusting the number of printing and cutting drivers you will need. Fully scalable, CalderaRIP can be enhanced with options and additional drivers to match the needs of your growing business.



## CalderaRIP v16

Package	 Caldera VisualRIP+		 Caldera GrandRIP+		 Caldera TextilePro	
MARKETS	Visual Communication		Visual Communication, Industrial Printing and Packaging		Sportswear, Soft Signage, Fashion and Home Decoration	
Edition	Pro	Enterprise	Pro	Enterprise	Standard	Enterprise
# printer drivers included	1 Large	1 Large	1 Grand	1 Grand	1 Large	1 Grand
# users included	1	1	1	1	1	1
PREPRESS TOOLS	✓	✓	✓	✓	✓	✓
CUT WORKFLOW						
ContourNesting	✓	✓	✓	✓	✓	✓
CutServer	✓	✓	✓	✓	Option	Option
GrandCutServer	Option	Option	Option	✓	Option	Option
Trim-O-Matik	Option	Option	Option	Option	Option	Option
PRODUCTION OPTIMIZATION						
CostEstimation	Option	✓	Option	✓	Option	✓
Hardware Acceleration	Option	Option	Option	Option	Option	Option
InkPerformer	Option	Option	Option	Option	Option	Option
COLOR MANAGEMENT						
X-Rite based ICC Profiling Engine	✓	✓	✓	✓	✓	✓
Advanced Spot Color Management	✓	✓	✓	✓	✓	✓
Pantone, RAL, HKS Libraries	✓	✓	✓	✓	✓	✓
RGBWorkflow	Option	Option	Option	Option	✓	✓
CustomInkset	Option	Option	Option	Option	✓	✓
PrintStandardVerifier	Option	Option	Option	Option	Option	Option
AUTOMATION						
Unlimited Hotfolders	✓	✓	✓	✓	✓	✓
Nexio	Option	Option	Option	Option	Option	Option



# User benefits

Optimize your production  
and make the most out  
of your equipment

## ADVANCED FILE PREPARATION

- High-quality preview
- Advanced Tiling feature to manage complex jobs
- Step&Repeat and ContourNesting to ease preparation of big batches
- Simple drag & drop interface to submit print jobs

## MASTER COLORS

- Advanced ICC profile creation tool (EasyMedia) with integrated x-rite i1Prism technology to ensure accurate, consistent colors across your fleet of printers
- Spot Color matching and replacement tools
- Spot Color libraries (Pantone, RAL, HKS, NCS)

## COST CONTROL, JOBS MONITORING, IMPROVED PROFITABILITY

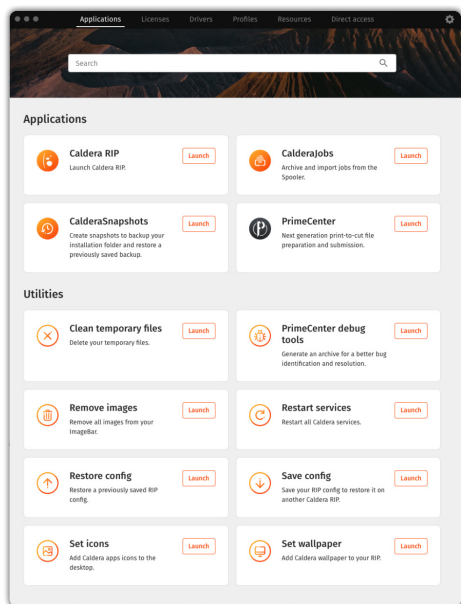
- Optimized profiles to reduce ink consumption
- PrintProof to avoid production wastage
- Use a single license to drive your entire fleet of printers & cutters
- Multi-queue spooler to enhance your productivity

## GREATER RELIABILITY

- Embedded Adobe PDF Print Engine 6 & Adobe PS Converter for an accurate rendering of your designs
- Improved color accuracy and coherence
- Reduced training costs and errors

## UNRIVALED PERFORMANCE

- The 64-bit platform combined with reliable OS platforms and powerful Caldera technology offers unrivaled RIP speed
- QuickConfig to automate complex print & cut jobs
- Save valuable time across your production



## Manage all your Caldera solutions

CalderaDock is the first step of the installation process, designed to help print & cut operators with maintenance and software management.

Available in several languages, CalderaDock is the perfect toolbox to manage the licenses and installation of all your Caldera solutions. Access all your apps and web tools, save and restore your RIP configurations, clean-up your temporary files and restart your Caldera services –all from one single interface.

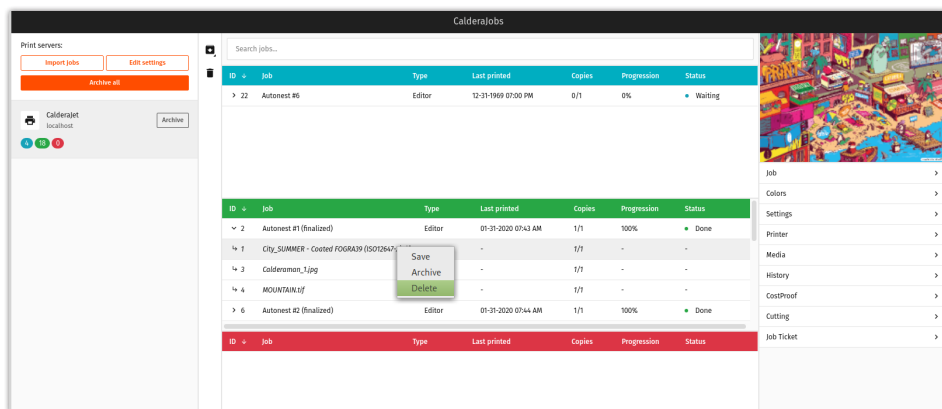
Browse the Discover tab to stay up to date with our latest news.

## CalderaJobs

From one intuitive interface, CalderaJobs provides a clean view of all your past jobs and allows you to keep track of your production with a search engine and detailed job view.

CalderaJobs can be accessed from CalderaDock to help users manage all their jobs efficiently and help them save valuable production time.

Moreover, CalderaJobs can be used as a default view for print operators in order to find, preview, print, delete or archive jobs easily.



## Optional Color Management features

# Master all your colors

## CustomInkset to customize your ink configurations

In textile and industrial printing applications such as ceramics, wood floors or bathroom tiles, market trends make it necessary to go beyond what CMYK alone can achieve. With CustomInkset, you can design your own ink configurations from scratch and discover new shades of printed colors. Insert your cartridges, choose which ones will be used in the mixes (process inks) and which ones will be handled separately (spot inks).



Caldera

TextilePro

The CustomInkset option is included in the Textile packages.

## PrintStandardVerifier to check the conformity of your prints

PrintStandardVerifier allows you to carry out conformity checks of your printing processes in terms of color consistency. When printing for large accounts, meeting international standards for color consistency is crucial— and PrintStandardVerifier embeds professional standards and specifications that are widely recognized across the graphic communication industry: Fogra, G7, Idealliance & ISO.

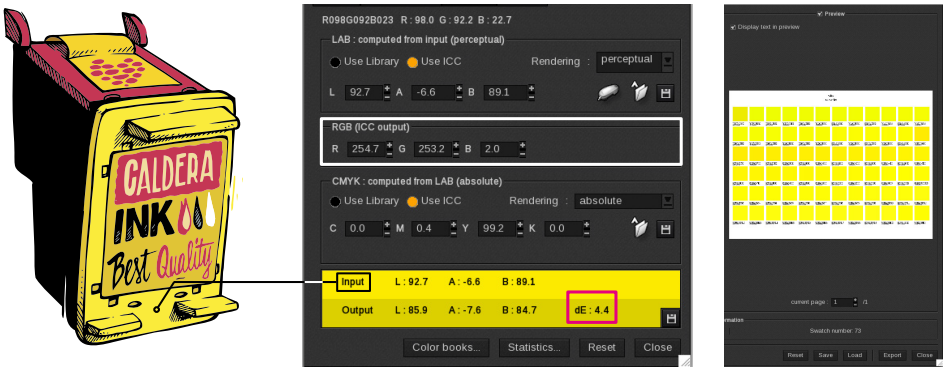


# RGBWorkflow

## to achieve richer, deeper blacks

Achieving a rich, deep black color is one of the biggest challenges faced by digital printers working alongside designers, especially when it comes to textile, photography or backlit media. As a rule, designers are working within the RGB color space while printers work in CMYK. Integrating a RGB workflow into the printing process makes it possible to reproduce more accurate blacks.

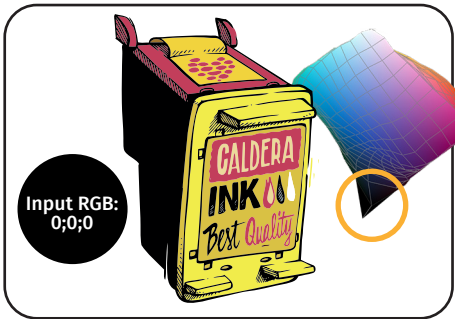
RGBWorkflow allows digital printers to carry out print profiles in RGB. By using the same profile from creation to production, the file undergoes less ICC conversions which could deteriorate the quality of your colors.



ColorBooks Management



CMYK Workflow



RGB Workflow (Black mixing)



Caldera

TextilePro

The RGBWorkflow option is included in the Textile packages.

# Master all your production costs

## CostEstimation

### ESTIMATE YOUR INK AND MEDIA CONSUMPTION

This optional cost module estimates all job-related costs before printing, based on similar jobs printed in the past or based on the ripped data of your jobs. Having precise cost estimation allows you to deliver more accurate quotes and efficiently manage your production costs.

### MEASURE ALL YOUR COSTS AND CO2 CONSUMPTION

Besides ink and media consumption, labor costs, manufacturing costs and additional costs can also be analyzed with CostEstimation. Moreover, the CostEstimation module can be used to measure your Co2 consumption, so that you can work toward a more sustainable, eco-friendly printing production.

### EXPORT YOUR COMPILED DATA

All data from CostEstimation can be exported in CSV format to be used in other analysis tools, to help you pinpoint areas of improvement and improve profitability.

The screenshot displays the 'CostEstimation' software interface. At the top, there are tabs for 'JOBS' and 'ADMIN', and a button for 'Update jobs'. Below these are filters for 'RIP' (set to 'All'), 'Printers' (set to 'All'), and a date range 'From' to 'To' with a 'Name' field. A 'Filter' button and a 'Clear' button are also present. The main table lists jobs with columns for Job, Process start, Printer, RIP, Total cost, and Total CO2. The first job is 'City\_STRASBOURG Vectors GreyLevel-SpotColor.pdf' printed on 'CalderaJet' using 'Mac V11', with a total cost of 16,27 € and total CO2 of 0,48 g. To the left of the table, a sidebar shows 'Job information', 'Costs', and 'CO2'. The 'CO2' section is expanded, showing a thumbnail of the job and a 'Job sheet' button. A red box highlights the 'Media consumption' section, which shows 'Media consumption' as 1.86 m² (1.86 m²/copy), 'Ink consumption' as 26.42 mL (26.42 mL/copy), and 'Media Waste' as 0.86%. To the right of the table, two large boxes display 'Total Cost' as 16.27 € and 'Total CO2' as 0.48 g. Below the table, a red box highlights the 'Media consumption' and 'Ink consumption' rows, showing 'Media consumption' as 1.86m² (1.86m²/copy) and 'Ink consumption' as 26.42mL (26.42mL/copy). At the bottom of the table, there are more job entries with their respective costs and CO2 values.

Job	Process start	Printer	RIP	Total cost	Total CO2
City_STRASBOURG Vectors GreyLevel-SpotColor.pdf	05/01/2017 05:31:31	CalderaJet	Mac V11	16,27 €	0,48 g
City_TEXTILE - Adobe RGB (1998).tif					
Sticker_Ink_Kiss+True-Cut.pdf Normal					
City_STRASBOURG Vectors GreyLevel-SpotColor.pdf	21/11/2016 08:06:11	CalderaJet	Mac V11	3 645,18 €	154,28 g
City_STRASBOURG Vectors CMYK.pdf	21/11/2016 08:03:35	CalderaJet	Mac V11	3 645,18 €	154,28 g
City_SUMMER - Coated FOGRA39 (ISO12647-2).tif	21/11/2016 08:00:39	CalderaJet	Mac V11	4 076,35 €	219,67 g

For printer compatibility, please refer to our website [caldera.com/supported-peripherals](http://caldera.com/supported-peripherals)

# InkPerformer for smart ink savings

Developed in association with the **color expert Alwan**, InkPerformer helps digital printers reduce their ink consumption while maintaining color accuracy. Easy to install and to use, InkPerformer improves grey neutrality while reducing production costs and making your production more sustainable.


You don't need to be a color expert or redo your ICC profiles to save on ink— once enabled, the InkPerformer module automatically calculates a new color combination which decreases the amount of ink printed on the substrate.

This method guarantees better output color precision compared to a GCR (Grey Component Replacement) process. Indeed, since there are no constraints on the black ink level, more ink can be saved. Moreover, users have the choice between 4 ink saving levels depending on the application, and the maximum saving level can help you save up to 35% ink.

### INKPERFORMER INCLUDES:

- Alwan's *Dynamic Maximum Black* technology
- Multiple ink saving levels
- Ink cost calculation tool
- User-friendly interface
- Can be deployed on an unlimited number of printers\*

New v3 Maximum Optimized



Job	Colors	Settings	Printer	Media	History	CostProof	Cutting	Job Ticket
		Usage	Cost	Ink+Media				
	Cyan	0.02 ml	0.00 Euro					
	Magenta	0.10 ml	0.02 Euro					
	Yellow	0.67 ml	0.11 Euro					
	Black	1.83 ml	0.31 Euro					
	Orange	0.56 ml	0.10 Euro					
	Red	0.47 ml	0.08 Euro					
	Light Cyan	0.84 ml	0.14 Euro					
	Light Magenta	1.52 ml	0.26 Euro					
	Light Black	2.36 ml	0.40 Euro					
	Total	8.37 ml	1.42 Euro					
	Media	1.01 m2	2.02 Euro	3.44 Euro				
My Adhesive Vinyl, 2.00 Euro/m2								
Finished								

Configure...

Ink saved: 30%

Configure...

Ink saved: 30%

Prior

Abort

Delete

Purge

Block

Print

Settings...

Reopen

Cut...

## A MORE SUSTAINABLE AND COST-EFFECTIVE PRODUCTION

Optimizing the ink consumption have significant benefits in terms of sustainability, both for the environment and for your business. Optimizing ink consumption is the first step to reduce waste and achieve a cost-effective production.

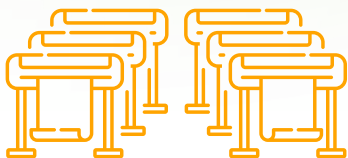


*\*InkPerformer is sold per printer driver. Please contact us regarding our packages.*

# Master your speed

## Hardware Acceleration to boost your RIP performance

Hardware Acceleration is an option designed to take advantage of the hardware's full capabilities in order to boost its performance and dramatically reduce ripping and printing times. Thanks to the OpenCL™ technology, all cores of the central processing unit (CPU) and graphical processing units (GPU) can be used simultaneously to speed up the ripping process in CalderaRIP.



**RUN MORE PRINTERS WITH  
FEWER COMPUTERS**



**SPEED UP YOUR  
PRODUCTION**



**SAVE MONEY ON HARDWARE**



**INCREASE YOUR ROI**

# For an efficient print-to-cut workflow

## CutServer & GrandCutServer to unify your print-to-cut workflow

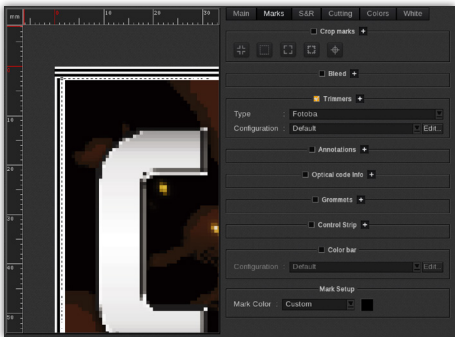
CalderaRIP is compatible with all the industry-leading cutting devices on the market. Designed to streamline the print-to-cut workflows of print shops using several cutting devices in their daily operations, both CutServer and GrandCutServer effectively manage cut contours, cutting marks and positioning marks to enhance accuracy while minimizing media waste. They generate machine-specific files for each job to ensure the most accurate cutting possible.




**CutServer** is recommended for roll cutters and automatic line cutting devices, while **GrandCutServer** is recommended for bigger flatbed cutters and controllers. Only one cut driver of each category is needed on a license to drive multiple cutters in that category.

## Trim-O-Matik to automate your trimming workflow

This optional cut module prepares your job for automatic trimmers. Trim-O-Matik generates the trim marks on the job, helping you save valuable production time and cut rectangular shapes at unrivaled speed.

Combined with Caldera's ContourNesting and Step&Repeat features, create optimized layouts at the click of a button to reduce media waste and further increase your production speed.



Package	 Caldera VisualRIP+		 Caldera GrandRIP+		 Caldera TextilePro	
	Pro	Enterprise	Pro	Enterprise	Standard	Enterprise
CUT WORKFLOW						
ContourNesting	✓	✓	✓	✓	✓	✓
CutServer	✓	✓	✓	✓	Option	Option
GrandCutServer	Option	Option	Option	✓	Option	Option
Trim-O-Matik	Option	Option	Option	Option	Option	Option



## Streamline your prepress operations

Our prepress solution PrimeCenter helps wide format digital printers optimize job preparation for printing and cutting. While automating repetitive prepress tasks, PrimeCenter allows you to increase operator productivity and optimize your layouts to save time and reduce media usage.

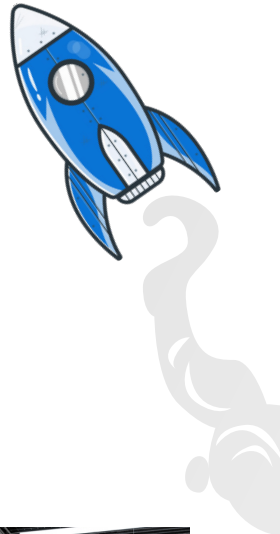


## PrimeCenter Workflow

Orders (or jobs) are first submitted to the prepress station, either manually, from a webshop or from an ERP. Then, PrimeCenter automatically generates nested layouts based on "recipes" created by the operator. After adding the marks and optimizing the nesting, PrimeCenter sends both PDF files (the print file and cut file) to the production stage. At this stage, CalderaRIP software can be integrated to RIP the file before printing.

## PrimeCenter benefits

- Suitable for print operations of all sizes
- Save valuable time on prepress tasks
- Generate perfectly optimized layouts to avoid media waste
- Automate file preparation for double-sided printing and cutting
- XML support for automation
- Advanced cutter mark control
- Generate ready-to-cut PDF files
- Seamless integration with CalderaRIP's Smart Import feature
- Compatible with any cutter controller supporting PDF
- Enable job tracking and submission



## Applications

PrimeCenter suits all types of Print & Cut applications, including:



Banners and posters



Stickers



POS



Soft signage

# PrimeCenter packages

Discover our annual subscription plans

## Basic

*The manual version*

Manual import  
Manual Apply Recipe  
Manual Export  
1 user interface

HelpDesk  
access to FAQ  
and tickets  
submission

### Includes:

- ✓ Rectangular & True Shape Nesting
- ✓ Canvas & True Shape Bleeding
- ✓ Texts, Barcode 39 and optical code
- ✓ Trimbox with Padding
- ✓ Manual preflight, export of PDF and Cut files
- ✓ Ready to print PDF files
- ✓ Ready to cut PDF files
- ✓ Extended cut marks options
- ✓ Automated crop page
- ✓ Automated crop marks
- ✓ Generate Cut Contour
- ✓ Auto Mirroring/Orientation
- ✓ Preflight & Fixup library
- ✓ Double Sided Printing
- ✗ Input Hotfolders
- ✗ Ganging
- ✗ Tear-Off Annotations
- ✗ Meta-Data from filename
- ✗ Output Auto Naming
- ✗ Output Hotfolders
- ✗ XML Job Ticket
- ✗ Automatic Preflight, export of PDF and Cut files

## Pro

*The semi-automated version*

Auto Import  
Auto Apply Recipe  
Manual Export  
1 user interface

HelpDesk access to  
FAQ, tickets submission,  
Dashboard and SLA\*  
*(2h/4h/8h response times depending  
on the severity of the issue)*

### Includes:

- ✓ Rectangular & True Shape Nesting
- ✓ Canvas & True Shape Bleeding
- ✓ Texts, Barcode 39 and optical code
- ✓ Trimbox with Padding
- ✓ Manual preflight, export of PDF and Cut files
- ✓ Ready to print PDF files
- ✓ Ready to cut PDF files
- ✓ Extended cut marks options
- ✓ Automated crop page
- ✓ Automated crop marks
- ✓ Generate Cut Contour
- ✓ Auto Mirroring/Orientation
- ✓ Preflight & Fixup library
- ✓ Double Sided Printing
- ✓ Input Hotfolders
- ✓ Ganging
- ✓ Tear-Off Annotations
- ✓ Meta-Data from filename
- ✓ Output Auto Naming
- ✗ Output Hotfolders
- ✗ XML Job Ticket
- ✗ Automatic Preflight, export of PDF and Cut files

## Max

*The fully automated version*

Auto Import  
Auto Apply Recipe  
Auto Export  
3 user interfaces

HelpDesk access to  
FAQ, tickets submission,  
Dashboard, and SLA\*  
*(2h/4h/8h response times depending  
on the severity of the issue)*

### Includes:

- ✓ Rectangular & True Shape Nesting
- ✓ Canvas & True Shape Bleeding
- ✓ Texts, Barcode 39 and optical code
- ✓ Trimbox with Padding
- ✓ Manual preflight, export of PDF and Cut files
- ✓ Ready to print PDF files
- ✓ Ready to cut PDF files
- ✓ Extended cut marks options
- ✓ Automated crop page
- ✓ Automated crop marks
- ✓ Generate Cut Contour
- ✓ Auto Mirroring/Orientation
- ✓ Preflight & Fixup library
- ✓ Double Sided Printing
- ✓ Input Hotfolders
- ✓ Ganging
- ✓ Tear-Off Annotations
- ✓ Meta-Data from filename
- ✓ Output Auto Naming
- ✓ Output Hotfolders
- ✓ XML Job Ticket
- ✓ Automatic Preflight, export of PDF and Cut files

New features will be included continuously in plans restricted by their capacity to be automated (Basic, Pro or Max)

[www.caldera.com/primecenter](http://www.caldera.com/primecenter)

#### PC Minimal Requirements:

Windows 10 / Official Debian 10 (see compatibility), Intel Core i3, 4GB RAM, 256GB HDD, 1280x1024 minimum resolution. Laptops are not recommended for production.

#### MAC Minimal Requirements:

macOS 10.15 Catalina (see compatibility), Intel Core i3, i5 or i7 based Mac mini, iMac or Mac Pro, 4GB RAM or more. Minimum 1GB RAM per core, recommended at least 2GB RAM per core, 250GB HDD, 1280x1024 minimum resolution. **MacBooks can be used for demonstration but are not supported by Caldera in production. PPC based hardware (G5, G4, ...) not supported.**



\*Service Level Agreement

# Our hardware solutions

## Spectrophotometers for accurate color measurement

Spectrophotometers are essential color measuring tools for digital printing professionals.

It is impossible for one single color configuration to work with all the variety of inks, media and printers of the market. To achieve accurate colors, a generic profile will never outperform precise color calibration. CalderaRIP embeds a powerful ICC profile creation tool (EasyMedia) with integrated x-rite i1 Prism technology to work with your spectrophotometers and help you calibrate and characterize your printing configurations.



Type	Manual	Automatic	Automatic	Automatic
Connectivity	USB	USB	USB and Ethernet	USB and Ethernet
Conditions <sup>1</sup>	M0, M1, M2, M3	M0	M0, M1, M2, M3	M0, M1, M2, M3
Aperture	Ø 8 mm	Ø 2-6-8 mm	Ø 2-6-8 mm	Ø 2-6-8 mm

### FEATURES

Linearization	•	•	•	•
ICC profiles	•	•	•	•
Sport colors measurement	•	•	•	•

### SUPPORTED MEDIA

Flexible	•	•	•	•
Rigid	•	•	•	•
Opaque	•	•	•	•
Transparent	-	•	•	•
Textile fabrics <sup>2</sup>	-	-	-	•
Maximum thickness	∞	20mm	20mm	20mm

### TOTALCOLOR QB EXCLUSIVE FEATURES

Measurement of fluorescent inks	•	•
D50 illuminations for backlit measurements	•	•
Camera for instant automatic positioning	•	•
Camera works even with distorted textile prints	-	•
Electrostatic textile sample holder with a frame and sticky mat designed for stretched textile	-	•
Air blowing system to prevent textile fibers contaminating the optics	-	•

<sup>1</sup> Measurement Conditions: M0 = undefined UV | M1 = D50 UV | M2 = UV filter | M3 = polarization filter

<sup>2</sup> Cotton, silk, polyester, viscose, wool, linen and mixed fabrics



**x-rite** i1iO3 (Compatible with CalderaRIP Version 14 or newer.)

**Automated XY scanning table to supplement the i1Pro3**

- Allows automated target reading with an i1Pro3 (not included)
- Can be purchased alone or as a bundle with the i1Pro3

# Pre-installed RIP stations for an easy setup

Caldera offers pre-installed RIP solutions on **DELL computers**

- 3 solutions depending on your needs (power & production volume)
- Comes with Linux OS & CalderaRIP software pre-installed
- Grants you access to 'Dell ProSupport' worldwide
- Includes a restoration USB stick



## CALDERA C1

Drives between 1 and 2  
Wide drivers



## CALDERA C2

Drives between 1 and 2 Large  
drivers or 1 Grand driver



## CALDERA C3

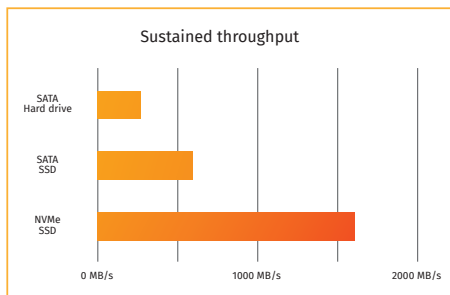
Drives between 1 and 2  
Grand drivers

### 3 years of DELL ProSupport included

Phone support 24h/24 – 365d/year  
On site intervention, day after  
call (ProSupport D+1)

### Non-Volatile Memory Express (NVMe)

Interface for SSD on PCIe  
• 4x times faster than SATA SSD



## All of Caldera with just one account

Our online platform WorkSpace is the single access point for all your Caldera resources. With just one account, register your licenses to manage all your software in one place, and download installation packages, software updates, drivers and ICC profiles. For those who need technical assistance, our support team is available at the click of a button.

Want to improve your knowledge of Caldera software? Subscribe to CalderaCare to browse through our training catalog\* and register to one of our webinars. Our experts are available to provide you with fast and effective training on Caldera modules to help you make the most out of your production.



**LICENSE  
REGISTRATION**



**PACKAGES  
INSTALLATION**



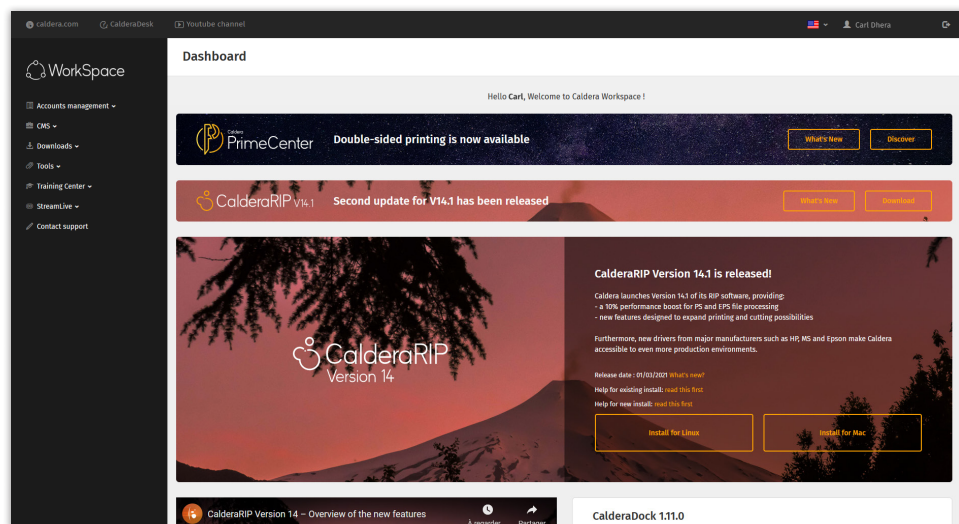
**TRAINING  
CENTER\***



**TECHNICAL  
SUPPORT**



**TECHNICAL  
DOCUMENTATION**



You can also access other platforms directly from the WorkSpace homepage, including our online documentation portal HelpDesk and Caldera's YouTube channel.

 Caldera  
**HelpDesk**  
[helpdesk.caldera.com](http://helpdesk.caldera.com)

 **YouTube**  
[youtube.com/CalderaRIP](http://youtube.com/CalderaRIP)

\*Please refer to page 25 for more information about our online trainings.

# CalderaCare

## What is CalderaCare?

CalderaCare is the support and maintenance solution for your CalderaRIP software, keeping your production up and running when you need it the most. Whatever the issue, our team of technical experts are on hand – and a subscription to CalderaCare also ensures all your software products are kept up to date with the latest versions and enhancements.



## The benefits speak for themselves

CalderaCare gives you the assurance of timely support when you encounter technical issues. It also comes with a range of additional user benefits to optimize your workflow and user experience.



### GET FAST, PREMIUM SUPPORT

When you register a support request, the priority and response times are in accordance with specified guidelines. CalderaCare is your direct contact route to our Caldera experts!

### ALWAYS STAY UP TO DATE

Caldera software products covered by CalderaCare are regularly upgraded with new features to enhance your user experience, including major upgrades to new versions.



### UNLIMITED ACCESS TO OUR WEBINARS

Access our full online training catalog for free, and benefit from fast, effective training on Caldera modules.

### RUN AN OPTIMAL PRODUCTION

Your access to future Caldera upgrades and version releases ensures you are running an optimal production with our latest features and technologies. A single CalderaCare subscription can be configured to support a multi-printer production site.



### DRIVER SWAPS

'Large' driver switches are included, and 'Grand' driver switches are available for a reduced fee.



## CalderaCare content

	Without CalderaCare	CalderaCare
Targeted Response Time	–	Critical 2h/Major 4h/Minor 8h
Remote Control	–	✓
Special exclusive feature	–	SmartImport
Major Upgrades	–	✓
Drivers Swaps	Not available	"Large" Driver swap - included "Grand" Driver swap - available for a reduced fee
Caldera Webinars	Prepayment required	Unlimited access to our live webinars
Customer Portal*	✓	✓

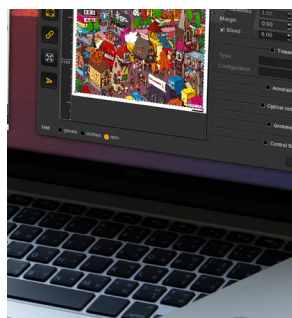
\*The Customer portal can be accessed via [workspace.caldera.com](https://workspace.caldera.com)

Please contact your Certified Reseller or the Caldera sales team via [www.caldera.com](https://www.caldera.com)

## Online trainings

**Our online trainings\* are the quickest, most convenient way to train your print operators on Caldera solutions. Our team of experienced trainers will guide you through a series of useful sessions ranging from Caldera Basics to Color Management, and more!**

With our range of online training sessions, we aim to make live training even more accessible to our customers. Attending our online webinars is the best way to get fast and effective training on Caldera modules, and anyone can participate from their office, their home or while they are away on business, without the inconvenience of travelling. Registrations are open to all partners and customers with an active subscription to CalderaCare\*.



We will guide you through all you need to know in order to use a wide range of Caldera modules. Both beginners and more advanced users can learn how to make the most out of their solution for better performance and results.

## Available trainings



**CALDERA  
BASICS**



**TILES  
MANAGEMENT**



**PRINT & CUT  
WORKFLOW**



**COLOR  
MANAGEMENT**



**SPOT COLOR  
MANAGEMENT**

View the training calendar and register directly on [workspace.caldera.com](https://workspace.caldera.com)

*We can also provide customized webinars tailored to your needs and agenda. For any request, please reach out to our sales representatives via [caldera.com/contact](https://caldera.com/contact)*

*\*Registrations to live online trainings are only available for Caldera partners and customers with an active subscription to CalderaCare. For customers without a CalderaCare subscription, a pre-payment is required.*



## Making connections to automate your production workflow

Nexio is an API adding a new level of automation to your printing processes by connecting your CalderaRIP with third-party programs, for example your web shop, your accounting packages and other applications, such as CRM, ERP and MIS.



### AUTOMATION

Workflow processes can be automated to minimize errors and reduce production costs.



### REPORTING

When jobs are finished, Nexio generates JDF reports to send back to the application.



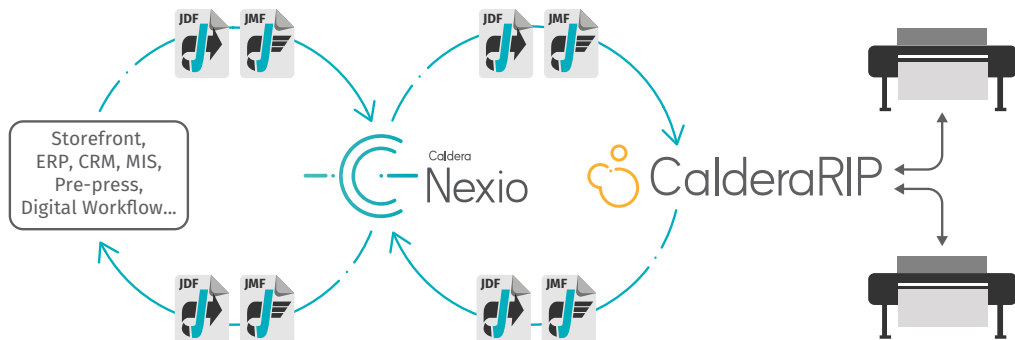
### COMMUNICATION

Nexio interfaces with your other applications using standard JDF/ JMF protocols, sends jobs to the RIP and collects reporting data to analyze production performance.



### ENHANCED PROFITABILITY

Take advantage of JDF automation to analyze your production performance and pinpoint areas of improvement to develop your production and enhance your profitability.



# Our partners

We support more than 1,600 printers and cutters

Caldera works closely with manufacturers in order to develop solutions that meet the needs and challenges of the digital printing market.

## OEM partners



## Supported manufacturers



## Strategic partners



# Our customers

Over 15,000 print service providers rely on Caldera for their daily operations.

We are constantly expanding our technical know-how of inkjet technologies, to help our customers tackle new markets— manufacturing (ceramics, glass, wood & textiles), packaging, labeling and digital printing presses.

## Sign, digital graphics and visual communication

**Argentina:** Gigantografica, Omnigraphics

**Australia:** Active Displays, Cactus Imaging, Catalyst, CMYK Hub, GSP Print, Prima

**Austria:** Arian, Bellutti, Druck.at, Gradwohl, Repteam Hansbauer, Salon Iris, Trevision

**Belgium:** Dael Printing, Dioss, Hecht, Supercolor, XL Reklame, Ye Print

**Brazil:** Dinamica, Pigmentum

**China:** Baicheng, Dong Sheng Advertising, Xiamen Art Printing

**Colombia:** Grupo Mercadeo

**Czech Republic:** Copy General, Top Advert

**Denmark:** LaserTryck

**Egypt:** Five Stars

**France:** Comptoir de l'Image, Dodeka, DS Impression, Picto, France Affiches, Nice Colors, Ad Visuel, Mangold, Ceanothe, TopColor, Komosol Groupe

**Germany:** CeweColor, Copyzentrum Passau, DieDruckerei, FlyerAlarm, Niggemeyer, PPS Imaging, Procedes Staudigl

**Hong Kong:** Art One Production, Bannershop, Professional Production, Tri Color

**Hungary:** Eclipse Print, OSG

**Italy:** Limonta, Pixart Printing, Sisma Italia

**Ireland:** Horizon Graphics, McGowans

**Japan:** Daido, Graphic, Sign Artec, Tokyo Lithmatic

**Korea:** Dain Communication, Gaunet

**Malaysia:** Comcolor, Pixio

**Mexico:** Pancarta, Print

**New Zealand:** Broderick Print, Juggernaut, Leeding Signs, Mirage, Print House, Boston Digital, Image Center, Original Screen

**Netherlands:** Big Impact, Piet Hovenaars, Van Straaten, Yoursurprise

**Norway:** Allkopi, Megaprint, SW Trykk

**Peru:** Litho Laser, Metacolor

**Poland:** Bluejet, City Service, Consalnet, FF Linea, Klonex, Topcan

**Romania:** Art Match, BigPrint

**Russia:** Arial, Fotolab, LIGO

**Serbia:** DPC, NS Plakat

**Singapore:** Film Screen, Siner Graphic

**Slovakia:** Bittner, Double P

**Slovenia:** V-Tisk

**South Africa:** Beith Digital, Bidvest, Hirt&Carter, Prismaflex, ScreenLine, Tali Digital

**Spain:** Fragma Espacios, Kendu, Marc Marti, MARGI, OEDIM, Stikets

**Sweden:** Big Image, Billes Tryckeri, Brand Factory, Formpress, Gigantprint, Storbildsbolaget

**Switzerland:** Comro, Christinger, Makro Art, Plotfactory, Richnerstutz

**Taiwan:** Forms Surface, Gain How Printing, Group Color Digital Image

**Turkey:** HKS Reklam

**UK:** AST Signs, Delta Display, Dominion, Icon Print, Imageco, Mediaco, Oasis Graphics, Service Graphics

**United Arab Emirates:** Reprotronics

**USA:** Big Mountain Imaging, Brand Imaging Group, Coloredge, Ferrari Color, Firehouse Image Center, NuSignSupply, Parallax, Pictura, SignZone, Vision Integrated Graphics.

## Textile Printing

**Austria:** Fahren Gartner, Typico

**Belgium:** Bioracer, Visix

**Bulgaria:** PNG

**China:** Huzhou Angye Digital Industry

**France:** Doublet, Duo Display, ET Cernay, Faber France, Mediama,

Ranitex, TIL/Deveaux

**Germany:** Frankfurter Fahren, Sachsen Fahren

**Italy:** Fiorenzo Sports

**Netherlands:** Faber Exposize, Van Straaten

**Poland:** Flagowa Kraina, Voigt Promotion

**Romania:** Rofobit

**UK:** Cestrian, Grafenia, Ultima Displays

**USA:** SignZone

## Industrial Printing

**Austria:** Digital Art Floors, Kaindl

**Bangladesh:** Naf Group

**Belgium:** Wollux

**France:** Adhetec, Euro PLV, GPS Packaging/ Cartonages de Gascogne, TIL

**Germany:** DS-Smith, Villeroy & Boch

**Hungary:** DS-Smith

**India:** Vennar Ceramics

**Indonesia:** Platinum Ceramics, Textile On Demand

**Japan:** Goto Iron Works, Toppan

**Korea:** Samyoung Industrial

**Czech Republic:** Solpap

**Malaysia:** Hans Printing & Packaging

**New Zealand:** Textiles Alive

**Netherlands:** Sorbo

**Peru:** Ceramics Kantu

**Singapore:** Sunway Woodcraft Construction, Tangs, Vim Technology & System Engineering

**Sweden:** DS-Smith

**USA:** Ideon Packaging

**UK:** DS-Smith, Liquid Lens



## Our awards

Caldera is an award-winning software solution recognized by industry professionals and magazines

### *Wide-Format Imaging Readers Choice Awards*

10x Top product RIP software  
4x Top product workflow software  
3x Top product color management software  
3x Best overall product  
Top product Web-to-Print 2018

### *Viscom*

Best software award 2013  
Best innovative product software 2012  
Best innovative green product 2012

### *Digital Printing and Imaging Association*

8x Outstanding service award  
5x Best Software Product of the Year

### *Image Reports*

Angel Awards - RIP of the year 2007

## Follow us on social media!



**CALDERA**

a **DOVER** company

1 rue des Frères Lumière - P.A. d'Eckbolsheim - 67038 Strasbourg Cedex 2 - France  
[www.caldera.com](http://www.caldera.com) - Tel. +33 388 210 000 - [contact@caldera.com](mailto:contact@caldera.com)

Copyright 2022 Caldera. All trademarks, logos and brand names mentioned in this publication are the property of their respective owners. All images and photographs here featured are the property of their respective owners.  
Cover photo by Atul Vinayak. Some images has been designed using resources from Freepik.com.

Caldera reserves the right to modify software specifications and the content cited in this document without prior notice.